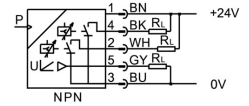


Pressure sensor SPAW-P100R-G12M-2NV-M12

Part number: 8022847

FESTO



[General operating condition](#)

Data sheet

| Feature | Value |
|--|--|
| Symbol | 00995380 |
| Certification | RCM compliance mark c UL us - Listed (OL) |
| CE marking (see declaration of conformity) | As per EU EMC directive As per EU RoHS directive |
| UKCA marking (see declaration of conformity) | To UK instructions for EMC To UK RoHS instructions |
| Note on materials | RoHS-compliant |
| Measured variable | Relative pressure |
| Method of measurement | Metal thin-film pressure sensor |
| Pressure measuring range initial value | 0 MPa |
| Pressure measuring range initial value | 0 bar |
| Pressure measuring range initial value | 0 psi |
| Pressure measuring range end value | 10 MPa |
| Pressure measuring range end value | 100 bar |
| Pressure measuring range end value | 1450 psi |
| Overload pressure | 20 MPa |
| Overload pressure | 200 bar |
| Overload pressure | 2900 psi |
| Operating medium | Compressed air as per ISO 8573-1:2010 [-:-:-] Liquid media Gaseous media |
| Temperature of medium | -20 °C ... 85 °C |
| Ambient temperature | 0 °C ... 80 °C |
| Accuracy in ± % FS | 1 %FS |
| Repetition accuracy in ± %FS | 0.15 %FS |
| Switching output | 2xNPN |
| Switching function | Freely programmable |
| Switching element function | Switchable |
| Max. output current | 250 mA |
| Analog output | 0 - 10 V |
| Rise time | 3 ms |
| Short-circuit protection | yes |
| DC operating voltage range | 15 V ... 35 V |
| Reverse polarity protection | for operating voltage |
| Electrical connection 1, connection type | Plug |
| Electrical connection 1, connection technology | M12x1 A-coded as per EN 61076-2-101 |

| Feature | Value |
|---|--|
| Electrical connection 1, number of pins/wires | 5 |
| Electrical connection 1, type of mounting | Screw-type lock |
| Electrical connection for input 1, connection pattern | 00995383 |
| Type of mounting | With external thread |
| Pneumatic connection | External thread G1/2 |
| Product weight | 230 g |
| Housing material | ABS High-alloy stainless steel |
| Materials in contact with the media | High-alloy stainless steel |
| Sealing ring material | NBR |
| Display type | 4-character alphanumeric LED display |
| Displayable unit(s) | MPa bar kPa kg/cm ² psi |
| Switching status indication | LED red |
| Setting options | Via display and pushbuttons |
| Protection against tampering | PIN code |
| Setting range threshold value | 0.5 % ... 100 % |
| Setting range hysteresis | 0.5 % ... 99.5 % |
| Degree of protection | IP65 IP67 |
| Corrosion resistance class (CRC) | 4 - Particularly high corrosion stress |
| LABS (PWIS) conformity | VDMA24364 zone III |