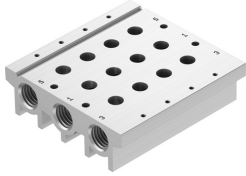


# Manifold rail VABM-L1-18S-G38-4

Part number: 574457

FESTO



 [General operating condition](#)

## Data sheet

| Feature                                            | Value                                                                                                                                                                                                                             |
|----------------------------------------------------|-----------------------------------------------------------------------------------------------------------------------------------------------------------------------------------------------------------------------------------|
| Width dimension                                    | 19 mm                                                                                                                                                                                                                             |
| Max. no. of valve positions                        | 16                                                                                                                                                                                                                                |
| Operating pressure                                 | -0.09 MPa ... 1 MPa                                                                                                                                                                                                               |
| Operating pressure                                 | -0.9 bar ... 10 bar                                                                                                                                                                                                               |
| Certification                                      | RCM compliance mark<br>c UL us - Recognized (OL)                                                                                                                                                                                  |
| Corrosion resistance class (CRC)                   | 2 - Moderate corrosion stress                                                                                                                                                                                                     |
| LABS (PWIS) conformity                             | VDMA24364-B1/B2-L                                                                                                                                                                                                                 |
| Suitability for the production of Li-ion batteries | Metals with more than 1% by mass of copper, zinc or nickel by mass are excluded from use. Exceptions are nickel in steel, chemically nickel-plated surfaces, printed circuit boards, cables, electrical plug connectors and coils |
| Cleanroom class                                    | Class 5 according to ISO 14644-1                                                                                                                                                                                                  |
| Max. tightening torque for H-rail mounting:        | 1.5 Nm                                                                                                                                                                                                                            |
| Max. tightening torque for valve mounting          | 1.18 Nm                                                                                                                                                                                                                           |
| Max. tightening torque for wall mounting           | 3 Nm                                                                                                                                                                                                                              |
| Product weight                                     | 368 g                                                                                                                                                                                                                             |
| Pneumatic connection 1                             | G3/8                                                                                                                                                                                                                              |
| Pneumatic connection 3                             | G3/8                                                                                                                                                                                                                              |
| Pneumatic connection 5                             | G3/8                                                                                                                                                                                                                              |
| Note on materials                                  | RoHS-compliant                                                                                                                                                                                                                    |
| Manifold rail material                             | Wrought aluminum alloy                                                                                                                                                                                                            |