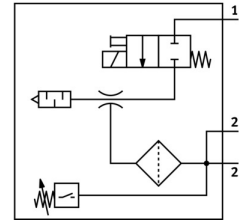


Vacuum generator VADM-200-P

Part number: 162520

FESTO



[General operating condition](#)

Data sheet

Feature	Value
Nominal width of Laval nozzle	2 mm
Width dimension	22 mm
Muffler construction type	Closed
Mounting position	Any
Ejector characteristics	High vacuum
Grade of filtration	≤40 µm
Manual override	Non-detenting
Integrated function	Shut off valve, electric Compressed air filter Vacuum switch
Measured variable	Relative pressure
Measuring principle	Piezoresistive
Switching element function	N/O contact
Switching function	Threshold value comparator
Symbol	00991304
Valve function	Closed
Reverse polarity protection	for all electrical connections
Display type	LED
Setting range hysteresis	-0.05 MPa ... -0.005 MPa
Setting range hysteresis	-0.5 bar ... -0.05 bar
Hysteresis setting range	-7.25 psi ... -0.725 psi
Setting options	Potentiometer
Switching status indication	Optical
Setting range threshold value	-0.09 MPa ... 0 MPa
Setting range threshold value	-0.9 bar ... 0 bar
Threshold value setting range	-13.05 psi ... 0 psi
Operating pressure	0.2 MPa ... 0.8 MPa
Operating pressure	2 bar ... 8 bar
Operating pressure	29 psi ... 116 psi
Max. vacuum	85 %
Nominal operating pressure	0.6 MPa
Nominal operating pressure	6 bar
Nominal operating pressure	87 psi

Feature	Value
Air supply time at nominal operating pressure	0.29 s
DC operating voltage range	21.6 V ... 26.4 V
Duty cycle	100%
Switching output	PNP
Certification	RCM compliance mark c UL us - Recognized (OL)
CE marking (see declaration of conformity)	As per EU EMC directive
Operating medium	Compressed air as per ISO 8573-1:2010 [7:4:4]
Information on operating and pilot media	Operation with oil lubrication not possible
Corrosion resistance class (CRC)	2 - Moderate corrosion stress
LABS (PWIS) conformity	VDMA24364-B1/B2-L
Temperature of medium	0 °C ... 60 °C
Degree of protection	IP65
Ambient temperature	0 °C ... 50 °C
Product weight	330 g
Pressure measuring range	0 MPa ... 0.1 MPa
Pressure measuring range	0 bar ... 1 bar
Pressure measuring range	0 psi ... 14.5 psi
Electrical connection	4-pin M8x1 Plug
Type of mounting	Optionally: With through-hole With internal thread
Pneumatic connection 1	G1/4
Pneumatic connection 3	Pneumatic muffler integrated
Vacuum connection	G3/8
Note on materials	RoHS-compliant
Seals material	NBR
Female nozzle material	Brass, nickel-plated
Compressed air filter material	PA
Material of filter housing	PC
Housing material	Wrought aluminum alloy
Muffler material	PE POM
Material of piston	POM
Material of jet nozzle	Brass, nickel-plated