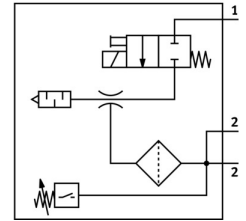


# Vacuum generator VADM-300-N

Part number: 162523

FESTO



[General operating condition](#)

## Data sheet

| Feature                       | Value  |
|-------------------------------|--|
| Nominal width of Laval nozzle | 3 mm   |
| Width dimension               | 22 mm  |
| Muffler construction type     | Closed   |
| Mounting position             | Any  |
| Ejector characteristics       | High vacuum  |
| Grade of filtration           | ≤40 µm   |
| Manual override               | Non-detenting  |
| Integrated function           | Shut off valve, electric<br>Compressed air filter<br>Vacuum switch |
| Measured variable             | Relative pressure  |
| Measuring principle           | Piezoresistive   |
| Switching element function    | N/O contact  |
| Switching function            | Threshold value comparator   |
| Symbol                        | 00991304   |
| Valve function                | Closed   |
| Reverse polarity protection   | for all electrical connections                                     |
| Display type                  | LED  |
| Setting range hysteresis      | -0.05 MPa ... -0.005 MPa   |
| Setting range hysteresis      | -0.5 bar ... -0.05 bar   |
| Hysteresis setting range      | -7.25 psi ... -0.725 psi   |
| Setting options               | Potentiometer  |
| Switching status indication   | Optical  |
| Setting range threshold value | -0.09 MPa ... 0 MPa  |
| Setting range threshold value | -0.9 bar ... 0 bar   |
| Threshold value setting range | -13.05 psi ... 0 psi   |
| Operating pressure            | 0.2 MPa ... 0.8 MPa  |
| Operating pressure            | 2 bar ... 8 bar  |
| Operating pressure            | 29 psi ... 116 psi   |
| Max. vacuum                   | 85 %   |
| Nominal operating pressure    | 0.6 MPa  |
| Nominal operating pressure    | 6 bar  |
| Nominal operating pressure    | 87 psi   |

| Feature                                       | Value  |
|---|--|
| Air supply time at nominal operating pressure | 0.26 s   |
| DC operating voltage range                    | 21.6 V ... 26.4 V  |
| Duty cycle                                    | 100%   |
| Switching output                              | NPN  |
| Certification                                 | RCM compliance mark<br>c UL us - Recognized (OL)         |
| CE marking (see declaration of conformity)    | As per EU EMC directive                                  |
| Operating medium                              | Compressed air as per ISO 8573-1:2010 [7:4:4]            |
| Information on operating and pilot media      | Operation with oil lubrication not possible              |
| Corrosion resistance class (CRC)              | 2 - Moderate corrosion stress                            |
| LABS (PWIS) conformity                        | VDMA24364-B1/B2-L  |
| Temperature of medium                         | 0 °C ... 60 °C   |
| Degree of protection                          | IP65   |
| Ambient temperature                           | 0 °C ... 50 °C   |
| Product weight                                | 350 g  |
| Pressure measuring range                      | 0 MPa ... 0.1 MPa  |
| Pressure measuring range                      | 0 bar ... 1 bar  |
| Pressure measuring range                      | 0 psi ... 14.5 psi                                       |
| Electrical connection                         | 4-pin<br>M8x1<br>Plug                                    |
| Type of mounting                              | Optionally:<br>With through-hole<br>With internal thread |
| Pneumatic connection 1                        | G1/4   |
| Pneumatic connection 3                        | Pneumatic muffler integrated                             |
| Vacuum connection                             | G3/8   |
| Note on materials                             | RoHS-compliant   |
| Seals material                                | NBR  |
| Female nozzle material                        | Brass, nickel-plated                                     |
| Compressed air filter material                | PA   |
| Material of filter housing                    | PC   |
| Housing material                              | Wrought aluminum alloy                                   |
| Muffler material                              | PE<br>POM  |
| Material of piston                            | POM  |
| Material of jet nozzle                        | Brass, nickel-plated                                     |