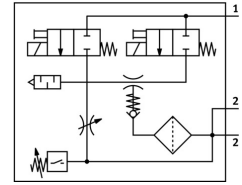


Vacuum generator VADMI-140-LS-N

Part number: 171060

FESTO



General operating condition

Data sheet

| Feature | Value |
|-------------------------------|--|
| Nominal width of Laval nozzle | 1.4 mm |
| Width dimension | 22 mm |
| Muffler construction type | Closed |
| Mounting position | Any |
| Ejector characteristics | High vacuum |
| Grade of filtration | ≤40 μm |
| Manual override | Non-detenting |
| Integrated function | Ejector pulse valve, electric Flow control Shut off valve, electric Compressed air filter Air saving function, electrical Non-return valve Vacuum switch |
| Measured variable | Relative pressure |
| Measuring principle | Piezoresistive |
| Switching element function | N/O contact |
| Switching function | Threshold value comparator |
| Symbol | 00991306 |
| Valve function | Closed |
| Reverse polarity protection | for all electrical connections |
| Display type | LED |
| Setting range hysteresis | -0.06 MPa ... -0.01 MPa |
| Setting range hysteresis | -0.6 bar ... -0.1 bar |
| Hysteresis setting range | -8.7 psi ... -1.45 psi |
| Setting options | Potentiometer |
| Switching status indication | Optical |
| Setting range threshold value | -0.09 MPa ... -0.02 MPa |
| Setting range threshold value | -0.9 bar ... -0.2 bar |
| Threshold value setting range | -13.05 psi ... -2.9 psi |
| Operating pressure | 0.2 MPa ... 0.8 MPa |
| Operating pressure | 2 bar ... 8 bar |
| Operating pressure | 29 psi ... 116 psi |
| Max. vacuum | 85 % |
| Nominal operating pressure | 0.6 MPa |
| Nominal operating pressure | 6 bar |

| Feature | Value |
|--|--|
| Nominal operating pressure | 87 psi |
| Max. overload pressure | 5 bar |
| Air supply time at nominal operating pressure with ejector pulse | 0.19 s |
| DC operating voltage range | 21.6 V ... 26.4 V |
| Duty cycle | 100% |
| Switching output | NPN |
| Certification | RCM compliance mark c UL us - Recognized (OL) |
| CE marking (see declaration of conformity) | As per EU EMC directive |
| UKCA marking (see declaration of conformity) | To UK instructions for EMC |
| Operating medium | Compressed air as per ISO 8573-1:2010 [7:4:4] |
| Information on operating and pilot media | Operation with oil lubrication not possible |
| Corrosion resistance class (CRC) | 2 - Moderate corrosion stress |
| LABS (PWIS) conformity | VDMA24364-B1/B2-L |
| Temperature of medium | 0 °C ... 60 °C |
| Degree of protection | IP65 |
| Ambient temperature | 0 °C ... 50 °C |
| Product weight | 330 g |
| Pressure measuring range | 0 MPa ... 0.1 MPa |
| Pressure measuring range | 0 bar ... 1 bar |
| Pressure measuring range | 0 psi ... 14.5 psi |
| Electrical connection | 4-pin M8x1 Plug |
| Type of mounting | Optionally: With through-hole With internal thread |
| Pneumatic connection 1 | G1/8 |
| Pneumatic connection 3 | Pneumatic muffler integrated |
| Vacuum connection | G1/4 |
| Note on materials | RoHS-compliant |
| Seals material | NBR |
| Female nozzle material | Brass, nickel-plated |
| Compressed air filter material | PA |
| Material of filter housing | PC |
| Housing material | Wrought aluminum alloy |
| Muffler material | PE POM |
| Material of piston | POM |
| Material of jet nozzle | Brass, nickel-plated |