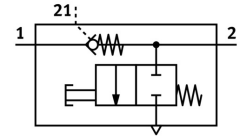


# Check valve VBNF-LBA-G18-Q4

Part number: 8193272

FESTO



[General operating condition](#)

## Data sheet

Feature	Value
Valve function	Unlockable non-return function
Selection of additional function	Manual exhaust
Pneumatic connection 1	QS-4
Pneumatic connection 2	G1/8
Pilot air port 21	QS-4
Type of mounting	Screw-in
Operating pressure	0.02 MPa ... 1 MPa
Operating pressure	0.2 bar ... 10 bar
Pilot pressure MPa	0.2 MPa ... 1 MPa
Pilot pressure	2 bar ... 10 bar
Pilot pressure psi	29 psi ... 145 psi
Ambient temperature	-10 °C ... 60 °C
Housing material	PBT
Operating medium	Compressed air as per ISO 8573-1:2010 [7:4:4]
Mounting position	Any
Actuation type, piloted non-return function	Pneumatic
Manual exhaust function	Non-detenting
Symbol	00991957
Rotatability	360 deg/continuous swiveling not permissible
Operating pressure for entire temperature range	0.02 MPa ... 1 MPa
Operating pressure for entire temperature range	0.2 bar ... 10 bar
Operating pressure for entire temperature range	2.9 psi ... 145 psi
Standard flow rate 1->2 (6-0)	500 l/min
Standard nominal flow rate 1->2 (6-5)	260 l/min
Switching time off	9 ms
On switching time	6 ms
Explosion prevention and protection	Zone 2 (ATEX) Zone 22 (ATEX)
Information on operating and pilot media	Operation with oil lubrication possible (required for further use)
Corrosion resistance class (CRC)	2 - Moderate corrosion stress
LABS (PWIS) conformity	VDMA24364-B1/B2-L
Temperature of medium	-10 °C ... 60 °C
Pilot medium	Compressed air as per ISO 8573-1:2010 [7:4:4]
Nominal tightening torque	6 Nm
Tolerance for nominal tightening torque	± 20%

<b>Feature</b>	<b>Value</b>
Product weight	27.9 g
Covering material	ES-BE
Note on materials	RoHS-compliant
Cover material	PBT
Seals material	NBR
Hollow bolt material	Wrought aluminum alloy
Releasing ring material	POM