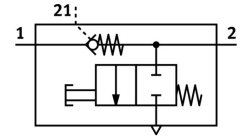


Non return valve VBNF-LBA-G18-Q6

Part number: 8001460

FESTO



[General operating condition](#)

Data sheet

| Feature | Value |
|---|--|
| Valve function | Unlockable non-return function |
| Selection of additional function | Manual exhaust |
| Pneumatic connection 1 | QS-6 |
| Pneumatic connection 2 | G1/8 |
| Pilot air port 21 | QS-6 |
| Type of mounting | Screw-in |
| Operating pressure | 0.02 MPa ... 1 MPa |
| Operating pressure | 0.2 bar ... 10 bar |
| Pilot pressure MPa | 0.2 MPa ... 1 MPa |
| Pilot pressure | 2 bar ... 10 bar |
| Pilot pressure psi | 29 psi ... 145 psi |
| Ambient temperature | -10 °C ... 60 °C |
| Housing material | PBT |
| Operating medium | Compressed air as per ISO 8573-1:2010 [7:4:4] |
| Mounting position | Any |
| Actuation type, piloted non-return function | Pneumatic |
| Manual exhaust function | Non-detenting |
| Symbol | 00991957 |
| Rotatability | 360 deg/continuous swiveling not permissible |
| Operating pressure for entire temperature range | 0.02 MPa ... 1 MPa |
| Operating pressure for entire temperature range | 0.2 bar ... 10 bar |
| Operating pressure for entire temperature range | 2.9 psi ... 145 psi |
| Standard flow rate 1->2 (6-0) | 500 l/min |
| Standard nominal flow rate 1->2 (6-5) | 260 l/min |
| Switching time off | 9 ms |
| On switching time | 6 ms |
| Explosion prevention and protection | Zone 2 (ATEX) Zone 22 (ATEX) |
| Information on operating and pilot media | Operation with oil lubrication possible (required for further use) |
| Corrosion resistance class (CRC) | 2 - Moderate corrosion stress |
| LABS (PWIS) conformity | VDMA24364-B1/B2-L |
| Temperature of medium | -10 °C ... 60 °C |
| Pilot medium | Compressed air as per ISO 8573-1:2010 [7:4:4] |
| Nominal tightening torque | 6 Nm |
| Tolerance for nominal tightening torque | ± 20% |

| Feature | Value |
|-------------------------|------------------------|
| Product weight | 27.3 g |
| Covering material | ES-BE |
| Note on materials | RoHS-compliant |
| Cover material | PBT |
| Seals material | NBR |
| Hollow bolt material | Wrought aluminum alloy |
| Releasing ring material | POM |