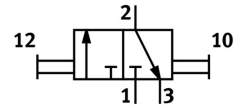



Hand slide valve VBOH-32-G14

Part number: 1302994

FESTO



 General operating condition

Data sheet

Feature	Value
Valve function	3/2, bistable
Pneumatic connection 1	G1/4
Pneumatic connection 2	G1/4
Actuation type	Manual
Type of mounting	Line installation Screw-in
Standard nominal flow rate	1675 l/min
Nominal width	8.4 mm
Operating pressure	-0.095 MPa ... 1.2 MPa
Operating pressure	-0.95 bar ... 12 bar
Ambient temperature	-10 °C ... 80 °C
Housing material	Wrought aluminum alloy, anodized
Operating medium	Compressed air as per ISO 8573-1:2010 [7:4:4]
Width dimension	31 mm
Application note	Please only screw in fittings with a cylindrical thread. Mounting conical threads can damage the housing and cause the sleeve to jam or malfunction.
Sealing principle	Soft
Mounting position	Any
Structural design	Sleeve gate valve
Type of control	Direct
Flow direction	Reversible
Symbol	00991286
Information on operating and pilot media	Operation with oil lubrication possible (required for further use)
Corrosion resistance class (CRC)	2 - Moderate corrosion stress
LABS (PWIS) conformity	VDMA24364-B2-L
Temperature of medium	-10 °C ... 80 °C
Actuating force	45 N
Product weight	35 g
Material of screwed plug	Anodized wrought aluminum alloy
Note on materials	RoHS-compliant
Seals material	NBR