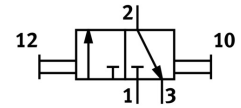


Hand slide valve VBOH-32-G34

Part number: 1629664

FESTO



 General operating condition

Data sheet

| Feature | Value |
|--|--|
| Valve function | 3/2, bistable |
| Pneumatic connection 1 | G3/4 |
| Pneumatic connection 2 | G3/4 |
| Actuation type | Manual |
| Type of mounting | Line installation Screw-in |
| Standard nominal flow rate | 7691 l/min |
| Nominal width | 19.3 mm |
| Operating pressure | -0.095 MPa ... 1.2 MPa |
| Operating pressure | -0.95 bar ... 12 bar |
| Ambient temperature | -10 °C ... 80 °C |
| Housing material | Wrought aluminum alloy, anodized |
| Operating medium | Compressed air as per ISO 8573-1:2010 [7:4:4] |
| Width dimension | 57.5 mm |
| Application note | Please only screw in fittings with a cylindrical thread. Mounting conical threads can damage the housing and cause the sleeve to jam or malfunction. |
| Sealing principle | Soft |
| Mounting position | Any |
| Structural design | Sleeve gate valve |
| Type of control | Direct |
| Symbol | 00991286 |
| Information on operating and pilot media | Operation with oil lubrication possible (required for further use) |
| Corrosion resistance class (CRC) | 2 - Moderate corrosion stress |
| LABS (PWIS) conformity | VDMA24364-B2-L |
| Temperature of medium | -10 °C ... 80 °C |
| Actuating force | 70 N |
| Product weight | 183 g |
| Material of screwed plug | Anodized wrought aluminum alloy |
| Note on materials | RoHS-compliant |
| Seals material | NBR |