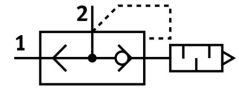


Quick exhaust valve VBQF-U-G14-Q8

Part number: 548002

FESTO



[PDF](#) General operating condition

Data sheet

Feature	Value
Valve function	Quick exhaust
Selection of additional function	with muffler
Pneumatic connection 1	QS-8
Pneumatic connection 2	G $\frac{1}{4}$
Type of mounting	Screw-in
Standard flow rate exhaust 6→0 bar	2500 l/min
Standard nominal flow rate pressurization 6→5 bar	800 l/min
Operating pressure	0.5 bar ... 10 bar
Ambient temperature	-10 °C ... 60 °C
Housing material	Die-cast aluminum Die-cast zinc
Operating medium	Compressed air as per ISO 8573-1:2010 [7:4:4]
Nominal width	7 mm
Mounting position	Any
Symbol	00991460
Information on operating and pilot media	Operation with oil lubrication possible (required for further use)
Corrosion resistance class (CRC)	1 - Low corrosion stress
LABS (PWIS) conformity	VDMA24364-B1/B2-L
Cleanroom class	Class 4 according to ISO 14644-1
Temperature of medium	-10 °C ... 60 °C
Noise level	75 dB(A)
Product weight	232 g
Note on materials	RoHS-compliant
Seals material	NBR