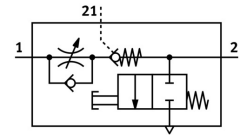


One-way flow control valve VFOF-CE-BAH-Q6-Q6

Part number: 8193267

FESTO



[PDF](#) General operating condition

Data sheet

Feature	Value
Valve function	Exhaust air flow control non-return function
Selection of additional function	Piloted check valve
Pneumatic connection 1	QS-6
Pneumatic connection 2	QS-6
Actuation type	Manual
Pilot air port 21	QS-6
Standard nominal flow rate in flow control direction	240 l/min
Standard nominal flow rate in non-return direction	400 l/min ... 460 l/min
Operating pressure	≤1 MPa
Operating pressure	≤10 bar
Operating pressure	≤145 psi
Pilot pressure MPa	0.2 MPa ... 1 MPa
Pilot pressure	2 bar ... 10 bar
Pilot pressure psi	29 psi ... 145 psi
Ambient temperature	-10 °C ... 60 °C
Housing material	PBT
Explosion prevention and protection	Zone 2 (ATEX) Zone 22 (ATEX)
Mounting position	Any
Actuation type, piloted non-return function	Pneumatic
Manual exhaust function	Non-detenting
Symbol	00991958
Operating pressure for entire temperature range	0.2 bar ... 10 bar
Standard flow rate in flow control direction 6 → 0 bar	420 l/min
Standard flow rate in non-return direction at 6 → 0 bar	400 l/min ... 460 l/min
Standard flow rate in non-return direction at 6 → 0 bar unactuated	400 l/min ... 460 l/min
Standard nominal flow rate in non-return direction actuated	150 l/min ... 230 l/min
Standard nominal flow rate in non-return direction, unactuated	120 l/min ... 220 l/min
Switching time off	9 ms
On switching time	6 ms
Operating medium	Compressed air as per ISO 8573-1:2010 [7:4:4]
Information on operating and pilot media	Operation with oil lubrication possible
LABS (PWIS) conformity	VDMA24364-B1/B2-L
Storage temperature	-20 °C ... 70 °C
Temperature of medium	-10 °C ... 60 °C
Pilot medium	Compressed air as per ISO 8573-1:2010 [7:4:4]

Feature	Value
Permissible actuation moment, adjusting screw	1 Nm
Product weight	24.6 g
Covering material	ES-BE
Note on materials	RoHS-compliant
Cover material	PBT
Seals material	NBR
Sleeve material	Wrought aluminum alloy
Releasing ring material	POM
Material of adjusting screw	Brass