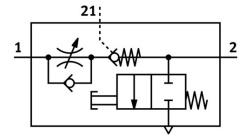



One-way flow control valve VFOF-LE-BAH-G18-Q4

Part number: 8193269

FESTO



 [General operating condition](#)

Data sheet

Feature	Value
Valve function	Exhaust air flow control non-return function
Selection of additional function	Piloted check valve
Pneumatic connection 1	QS-4
Pneumatic connection 2	G1/8
Actuation type	Manual
Pilot air port 21	QS-4
Adjusting element	Internal hexagon
Type of mounting	Screw-in
Standard nominal flow rate in flow control direction	240 l/min
Standard nominal flow rate in non-return direction	120 l/min ... 220 l/min
Operating pressure	0.02 MPa ... 1 MPa
Operating pressure	0.2 bar ... 10 bar
Operating pressure	2.9 psi ... 145 psi
Pilot pressure MPa	0.2 MPa ... 1 MPa
Pilot pressure	2 bar ... 10 bar
Pilot pressure psi	29 psi ... 145 psi
Ambient temperature	-10 °C ... 60 °C
Housing material	PBT
Explosion prevention and protection	Zone 2 (ATEX) Zone 22 (ATEX)
Mounting position	Any
Actuation type, piloted non-return function	Pneumatic
Manual exhaust function	Non-detenting
Symbol	00991958
Rotatability	360 deg/continuous swiveling not permissible
Operating pressure for entire temperature range	0.02 MPa ... 1 MPa
Operating pressure for entire temperature range	0.2 bar ... 10 bar
Operating pressure for entire temperature range	2.9 psi ... 145 psi
Standard flow rate in flow control direction 6 -> 0 bar	420 l/min
Standard flow rate in non-return direction at 6 -> 0 bar	400 l/min ... 460 l/min
Standard flow rate in non-return direction at 6 -> 0 bar unactuated	400 l/min ... 460 l/min
Standard nominal flow rate in non-return direction actuated	150 l/min ... 230 l/min
Standard nominal flow rate in non-return direction, unactuated	120 l/min ... 220 l/min
Switching time off	9 ms
On switching time	6 ms
Operating medium	Compressed air as per ISO 8573-1:2010 [7:4:4]

Feature	Value
Information on operating and pilot media	Operation with oil lubrication possible (required for further use)
LABS (PWIS) conformity	VDMA24364-B1/B2-L
Temperature of medium	-10 °C ... 60 °C
Pilot medium	Compressed air as per ISO 8573-1:2010 [7:4:4]
Nominal tightening torque	3 Nm
Tolerance for nominal tightening torque	± 20%
Permissible actuation moment, adjusting screw	1 Nm
Product weight	29.2 g
Covering material	ES-BE
Note on materials	RoHS-compliant
Cover material	PBT
Seals material	NBR
Hollow bolt material	Wrought aluminum alloy
Sleeve material	Wrought aluminum alloy
Releasing ring material	POM
Material of adjusting screw	Brass