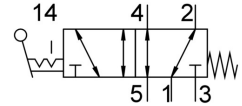


Toggle lever valve VHEF-V-B52-N18

Part number: 5300041

FESTO



[General operating condition](#)

Data sheet

| Feature | Value |
|--|--|
| Valve function | 5/2, bistable |
| Actuation type | Manual |
| Width | 20 mm |
| Standard nominal flow rate | 750 l/min |
| Pneumatic working port | 1/8 NPT |
| Operating pressure | -0.095 MPa ... 1 MPa |
| Operating pressure | -0.95 bar ... 10 bar |
| Structural design | Piston gate valve |
| Nominal width | 5.2 mm |
| Exhaust air function | With flow control option |
| Application note | Operate by hand only |
| Sealing principle | Soft |
| Mounting position | Any |
| Manual override | Detenting |
| Type of control | Direct |
| Flow direction | Reversible |
| Symbol | 00995879 |
| Lap | Overlap |
| Max. switching frequency | 0.5 Hz |
| Explosion prevention and protection | Zone 1 (ATEX) Zone 2 (ATEX) Zone 21 (ATEX) Zone 22 (ATEX) |
| Operating medium | Compressed air as per ISO 8573-1:2010 [7:-:-] |
| Information on operating and pilot media | Operation with oil lubrication possible (required for further use) |
| Corrosion resistance class (CRC) | 1 - Low corrosion stress |
| LABS (PWIS) conformity | VDMA24364-B1/B2-L |
| Temperature of medium | -10 °C ... 60 °C |
| Ambient temperature | -10 °C ... 60 °C |
| Actuating torque | 1.1 Nm |
| Unlocking torque | 0.6 Nm |
| Max. force on actuator | 200 N |
| Max. transverse load on actuator | 140 N |
| Product weight | 208 g |
| Type of mounting | Optionally: Front panel mounting With through-hole |

| Feature | Value |
|------------------------|----------------------------------|
| Pneumatic connection 1 | 1/8 NPT |
| Pneumatic connection 2 | 1/8 NPT |
| Pneumatic connection 3 | 1/8 NPT |
| Pneumatic connection 4 | 1/8 NPT |
| Pneumatic connection 5 | 1/8 NPT |
| Note on materials | RoHS-compliant |
| Cover material | PA-reinforced |
| Seals material | NBR |
| Housing material | Wrought aluminum alloy, anodized |
| Lever material | PA-reinforced |