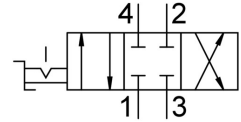
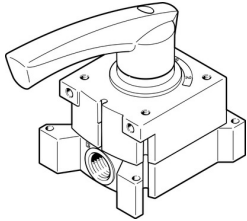


# Hand lever valve VHER-H-B43C-N18

Part number: 3488212

FESTO



[PDF](#) General operating condition

## Data sheet

Feature	Value
Valve function	4/3, closed
Actuation type	Manual
Width	51 mm
Standard nominal flow rate	600 l/min
Pneumatic working port	NPT1/8-27
Operating pressure	0 bar ... 10 bar
Information on operating pressure	Vacuum operation at connection 3 only In dual pressure mode, the pressure at connection 1 must be higher than at connection 3.
Structural design	Rotary gate valve
Nominal width	6 mm
Exhaust air function	With flow control option
Application note	Operate by hand only
Sealing principle	Hard
Type of control	Direct
Flow direction	Non-reversible
Symbol	00995942
Underlap	yes
Switching position indication	with accessories
Operating medium	Compressed air as per ISO 8573-1:2010 [7:4:4]
Information on operating and pilot media	Operation with oil lubrication possible (required for further use)
Corrosion resistance class (CRC)	2 - Moderate corrosion stress
LABS (PWIS) conformity	VDMA24364-B1/B2-L
Temperature of medium	-20 °C ... 80 °C
Ambient temperature	-20 °C ... 80 °C
Actuating torque	0.9 Nm
Product weight	260 g
Type of mounting	Optionally: Front panel mounting With through-hole
Pneumatic connection 1	NPT1/8-27
Pneumatic connection 2	NPT1/8-27
Pneumatic connection 3	NPT1/8-27
Pneumatic connection 4	NPT1/8-27
Note on materials	RoHS-compliant
Seals material	NBR
Housing material	Die-cast aluminum

Feature	Value
Lever material	Die-cast aluminum