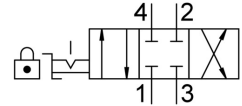


# Hand lever valve VHER-P-H-B43C-B-M5

Part number: 3410680

FESTO



[PDF General operating condition](#)

## Data sheet

| Feature                                  | Value   |
|--|---|
| Valve function                           | 4/3, closed   |
| Actuation type                           | Manual  |
| Width                                    | 30 mm   |
| Standard nominal flow rate               | 260 l/min   |
| Pneumatic working port                   | M5  |
| Operating pressure                       | 0 bar ... 10 bar  |
| Information on operating pressure        | Vacuum operation at connection 3 only<br>In dual pressure mode, the pressure at connection 1 must be higher than at connection 3. |
| Structural design                        | Rotary gate valve   |
| Nominal width                            | 4 mm  |
| Exhaust air function                     | With flow control option  |
| Application note                         | Operate by hand only  |
| Actuator lock                            | can be closed with accessories  |
| Sealing principle                        | Hard  |
| Type of control                          | Direct  |
| Flow direction                           | Non-reversible  |
| Symbol                                   | 00995944  |
| Underlap                                 | yes   |
| Switching position indication            | with accessories  |
| Explosion prevention and protection      | Zone 2 (ATEX)<br>Zone 22 (ATEX)   |
| Operating medium                         | Compressed air as per ISO 8573-1:2010 [7:4:4]   |
| Information on operating and pilot media | Operation with oil lubrication possible (required for further use)  |
| Corrosion resistance class (CRC)         | 2 - Moderate corrosion stress   |
| LABS (PWIS) conformity                   | VDMA24364-B1/B2-L   |
| Temperature of medium                    | -20 °C ... 80 °C  |
| Ambient temperature                      | -20 °C ... 80 °C  |
| Actuating torque                         | 0.5 Nm  |
| Product weight                           | 80 g  |
| Type of mounting                         | Optionally:<br>Front panel mounting<br>With through-hole  |
| Pneumatic connection 1                   | M5  |
| Pneumatic connection 2                   | M5  |
| Pneumatic connection 3                   | M5  |
| Pneumatic connection 4                   | M5  |

| <b>Feature</b>    | <b>Value</b>   |
|-------------------|----------------|
| Note on materials | RoHS-compliant |
| Seals material    | NBR            |
| Housing material  | PA             |
| Lever material    | PA             |