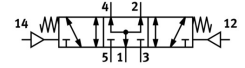


# Pneumatic valve VL-5/3B-1/8-B

Part number: 31310

FESTO



 [General operating condition](#)

## Data sheet

Feature	Value
Valve function	5/3, pressurized
Actuation type	Pneumatic
Width	26 mm
Standard nominal flow rate	1000 l/min
Pneumatic working port	G1/8
Operating pressure	-0.09 MPa ... 1 MPa
Operating pressure	-0.9 bar ... 10 bar
Structural design	Piston gate valve
Reset method	Mechanical spring
Nominal width	8 mm
Width dimension	27 mm
Exhaust air function	With flow control option
Sealing principle	Soft
Mounting position	Any
Manual override	None
Type of control	Direct
Pilot air supply port	External
Flow direction	Reversible
Symbol	00991022
Lap	Overlap
Pilot pressure MPa	0.3 MPa ... 1 MPa
Pilot pressure	3 bar ... 10 bar
Max. switching frequency	3 Hz
Switching time off	14 ms
On switching time	5 ms
Changeover time	16 ms
Operating medium	Compressed air as per ISO 8573-1:2010 [7:4:4]
Information on operating and pilot media	Operation with oil lubrication possible (required for further use)
Corrosion resistance class (CRC)	1 - Low corrosion stress
LABS (PWIS) conformity	VDMA24364-B1/B2-L
Storage temperature	-40 °C ... 60 °C
Temperature of medium	-10 °C ... 60 °C
Pilot medium	Compressed air as per ISO 8573-1:2010 [7:4:4]
Ambient temperature	-10 °C ... 60 °C
Product weight	320 g

<b>Feature</b>	<b>Value</b>
Type of mounting	Optionally: On PR rail With through-hole
Pilot exhaust air port 82	M5
Pilot air port 12	G1/8
Pilot air port 14	G1/8
Pneumatic connection 1	G1/8
Pneumatic connection 2	G1/8
Pneumatic connection 3	G1/8
Pneumatic connection 4	G1/8
Pneumatic connection 5	G1/8
Note on materials	RoHS-compliant
Seals material	NBR
Housing material	Die-cast aluminum