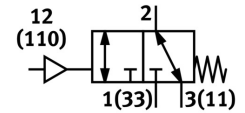
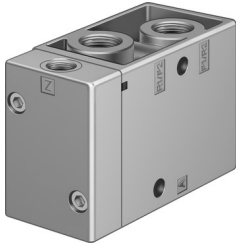


Pneumatic valve VL/O-3-1/2

Part number: 9983

FESTO



[PDF](#) General operating condition

Data sheet

Feature	Value
Valve function	3/2, open/closed, monostable
Actuation type	Pneumatic
Width	52 mm
Standard nominal flow rate	3700 l/min
Pneumatic working port	G1/2
Operating pressure	-0.095 MPa ... 1 MPa
Operating pressure	-0.95 bar ... 10 bar
Structural design	Plate seat
Reset method	Mechanical spring
Nominal width	14 mm
Width dimension	69 mm
Exhaust air function	With flow control option
Sealing principle	Soft
Mounting position	Any
Manual override	None
Type of control	Direct
Pilot air supply port	External
Flow direction	Reversible
Symbol	00991030
Lap	Underlap
Pilot pressure MPa	0.1 MPa ... 1 MPa
Pilot pressure	1 bar ... 10 bar
b-value	0.3
Switching time off	30 ms
On switching time	17 ms
Operating medium	Compressed air as per ISO 8573-1:2010 [7:4:4]
Information on operating and pilot media	Operation with oil lubrication possible (required for further use)
Corrosion resistance class (CRC)	1 - Low corrosion stress
LABS (PWIS) conformity	VDMA24364-B1/B2-L
Storage temperature	-20 °C ... 60 °C
Temperature of medium	-10 °C ... 60 °C
Pilot medium	Compressed air as per ISO 8573-1:2010 [7:4:4]
Ambient temperature	-10 °C ... 60 °C
Product weight	860 g

Feature	Value
Type of mounting	Optionally: On terminal strip With through-hole
Pilot air port 110	G1/4
Pilot air port 12	G1/4
Pneumatic connection 1	G1/2
Pneumatic connection 11	G1/2
Pneumatic connection 2	G1/2
Pneumatic connection 3	G1/2
Pneumatic connection 33	G1/2
Note on materials	RoHS-compliant
Seals material	NBR
Housing material	Die-cast aluminum