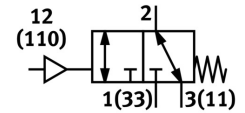
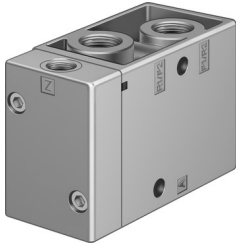


# Pneumatic valve VL/O-3-1/8-B-NPT

Part number: 10840

FESTO



General operating condition

## Data sheet

Feature	Value
Valve function	3/2, open/closed, monostable
Actuation type	Pneumatic
Width	26 mm
Standard nominal flow rate	500 l/min
Pneumatic working port	1/8 NPT
Operating pressure	-0.095 MPa ... 1 MPa
Operating pressure	-0.95 bar ... 10 bar
Structural design	Plate seat
Reset method	Mechanical spring
Nominal width	5 mm
Width dimension	27 mm
Exhaust air function	With flow control option
Sealing principle	Soft
Mounting position	Any
Type of control	Direct
Pilot air supply port	External
Flow direction	Reversible
Symbol	00991030
Lap	Underlap
Pilot pressure MPa	0.1 MPa ... 1 MPa
Pilot pressure	1 bar ... 10 bar
Max. switching frequency	12 Hz
Switching time off	10 ms
On switching time	4 ms
Operating medium	Compressed air as per ISO 8573-1:2010 [7:4:4]
Information on operating and pilot media	Operation with oil lubrication possible (required for further use)
Corrosion resistance class (CRC)	1 - Low corrosion stress
LABS (PWIS) conformity	VDMA24364-B2-L
Storage temperature	-20 °C ... 60 °C
Temperature of medium	-10 °C ... 60 °C
Pilot medium	Compressed air as per ISO 8573-1:2010 [7:4:4]
Ambient temperature	-10 °C ... 60 °C
Product weight	150 g
Type of mounting	Optionally: On terminal strip With through-hole

<b>Feature</b>	<b>Value</b>
Pilot air port 110	1/8 NPT
Pilot air port 12	1/8 NPT
Pneumatic connection 1	1/8 NPT
Pneumatic connection 11	1/8 NPT
Pneumatic connection 2	1/8 NPT
Pneumatic connection 3	1/8 NPT
Pneumatic connection 33	1/8 NPT
Note on materials	RoHS-compliant
Seals material	NBR
Housing material	Die-cast aluminum