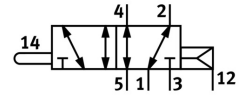
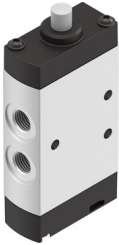


Stem actuated valve VMEF-S-M52-E-G18

Part number: 8031299

FESTO



 [General operating condition](#)

Data sheet

Feature	Value
Valve function	5/2, monostable
Actuation type	Mechanical
Width	20 mm
Standard nominal flow rate	750 l/min
Pneumatic working port	G1/8
Operating pressure	-0.095 MPa ... 1 MPa
Operating pressure	-0.95 bar ... 10 bar
Structural design	Piston gate valve
Reset method	Pneumatic spring
Nominal width	5.2 mm
Application note	Do not use as mechanical stop
Sealing principle	Soft
Mounting position	Any
Type of control	Direct
Flow direction	Reversible
Symbol	00992217
Lap	Overlap
Max. switching frequency	3 Hz
Explosion prevention and protection	Zone 1 (ATEX) Zone 2 (ATEX) Zone 21 (ATEX) Zone 22 (ATEX)
Operating medium	Compressed air as per ISO 8573-1:2010 [7:-:-]
Information on operating and pilot media	Operation with oil lubrication possible (required for further use)
Corrosion resistance class (CRC)	2 - Moderate corrosion stress
LABS (PWIS) conformity	VDMA24364-B1/B2-L
Temperature of medium	-10 °C ... 60 °C
Ambient temperature	-10 °C ... 60 °C
Actuating force	28 N
Product weight	144 g
Type of mounting	With through-hole
Pilot air port 12/14	M5
Pneumatic connection 1	G1/8
Pneumatic connection 2	G1/8
Pneumatic connection 3	G1/8
Pneumatic connection 4	G1/8

Feature	Value
Pneumatic connection 5	G1/8
Note on materials	RoHS-compliant
Cover material	PA-reinforced
Seals material	NBR
Housing material	Wrought aluminum alloy, anodized