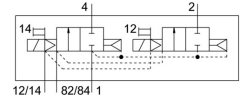
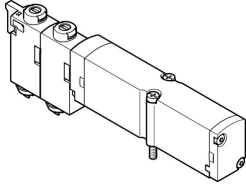


Air solenoid valve VMPA14-M1HF-D-PI

Part number: 578815

FESTO



[PDF](#) General operating condition

Data sheet

Feature	Value
Valve function	2x2/2 closed, monostable
Actuation type	Electrical
Valve size	14 mm
Standard nominal flow rate	550 l/min ... 650 l/min
Operating voltage	24V DC
Operating pressure	0.3 MPa ... 1 MPa
Operating pressure	3 bar ... 10 bar
Structural design	Piston gate valve
Reset method	Pneumatic spring
Certification	c UL us - Recognized (OL)
Degree of protection	IP65 In mounted state as per IEC 60529
Sealing principle	Soft
Mounting position	Any
Manual override	Detenting Non-detenting
Type of control	Pilot-controlled
Flow direction	Non-reversible
Symbol	00991803
Lap	Overlap
Signal status display	yes
Pilot pressure MPa	0.3 MPa ... 0.8 MPa
Pilot pressure	3 bar ... 8 bar
Suitability for vacuum	no
Note on standard nominal flow rate	MPA-C: 720 l/min MPA-L: 650 l/min MPA-S: 550 l/min
Standard nominal flow rate with QS-8	550 l/min ... 720 l/min
Switching time off	26 ms
On switching time	9 ms
Max. positive test pulse with 0 signal	400 µs
Max. negative test pulse on 1 signal	200 µs
Permissible voltage fluctuations	+/- 25 %
Operating medium	Compressed air as per ISO 8573-1:2010 [7:4:4]
Information on operating and pilot media	Operation with oil lubrication possible (required for further use)

Feature	Value
Vibration resistance	Transport application test with severity level 2 as per FN 942017-4 and EN 60068-2-6
Shock resistance	Shock test with severity level 2 as per FN 942017-5 and EN 60068-2-27
Corrosion resistance class (CRC)	1 - Low corrosion stress
LABS (PWIS) conformity	VDMA24364-B1/B2-L
Storage temperature	-20 °C ... 40 °C
For use in the food industry	See supplementary material information
Temperature of medium	-5 °C ... 50 °C
Relative air humidity	Max. 90 % at 40 °C
Ambient temperature	-5 °C ... 60 °C
Max. tightening torque for valve mounting	0.65 Nm
Product weight	77 g
Type of mounting	With through-hole
Note on materials	RoHS-compliant
Seals material	NBR
Housing material	Die-cast aluminum