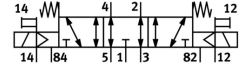
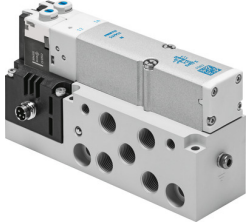


Air solenoid valve VMPA2-M1H-E-S-G1/8-PI

FESTO

Part number: 537976



[General operating condition](#)

Data sheet

| Feature | Value |
|--|---|
| Valve function | 5/3, exhausted |
| Actuation type | Electrical |
| Valve size | 20 mm |
| Standard nominal flow rate | 590 l/min |
| Pneumatic working port | G1/8 |
| Operating voltage | 24V DC |
| Operating pressure | -0.09 MPa ... 1 MPa |
| Operating pressure | -0.9 bar ... 10 bar |
| Structural design | Piston gate valve |
| Reset method | Mechanical spring |
| Certification | c UL us - Recognized (OL) |
| CE marking (see declaration of conformity) | As per EU EMC directive As per EU RoHS directive |
| UKCA marking (see declaration of conformity) | To UK instructions for EMC To UK RoHS instructions |
| Degree of protection | IP65 In mounted state as per IEC 60529 |
| Exhaust air function | With flow control option |
| Sealing principle | Soft |
| Mounting position | Any |
| Manual override | Detenting Non-detenting |
| Type of control | Pilot-controlled |
| Pilot air supply port | External |
| Flow direction | Reversible |
| Symbol | 00991032 |
| Lap | Overlap |
| Signal status display | yes |
| Pilot pressure MPa | 0.3 MPa ... 0.8 MPa |
| Pilot pressure | 3 bar ... 8 bar |
| Suitability for vacuum | yes |
| Standard nominal flow rate with QS-8 | 590 l/min |
| Switching time off | 47 ms |
| On switching time | 11 ms |
| Changeover time | 23 ms |
| Max. positive test pulse with 0 signal | 400 µs |

| Feature | Value |
|---|--|
| Max. negative test pulse on 1 signal | 900 µs |
| Permissible voltage fluctuations | +/- 25 % |
| Operating medium | Compressed air as per ISO 8573-1:2010 [7:4:4] |
| Information on operating and pilot media | Operation with oil lubrication possible (required for further use) |
| Vibration resistance | Transport application test with severity level 2 as per FN 942017-4 and EN 60068-2-6 |
| Shock resistance | Shock test with severity level 2 as per FN 942017-5 and EN 60068-2-27 |
| Corrosion resistance class (CRC) | 1 - Low corrosion stress |
| LABS (PWIS) conformity | VDMA24364-B1/B2-L |
| Storage temperature | -20 °C ... 40 °C |
| Temperature of medium | -5 °C ... 50 °C |
| Relative air humidity | Max. 90 % at 40 °C |
| Ambient temperature | -5 °C ... 50 °C |
| Max. tightening torque for valve mounting | 0.65 Nm |
| Product weight | 325 g |
| Electrical connection | 4-pin M8x1 Plug as per EN 60947-5-2 |
| Type of mounting | With through-hole |
| Pilot air port 12/14 | M5 |
| Pilot exhaust air port 82/84 | M5 |
| Pneumatic connection 1 | G1/8 |
| Pneumatic connection 2 | G1/8 |
| Pneumatic connection 3 | G1/8 |
| Pneumatic connection 4 | G1/8 |
| Pneumatic connection 5 | G1/8 |
| Note on materials | RoHS-compliant |
| Seals material | NBR |
| Housing material | Die-cast aluminum |