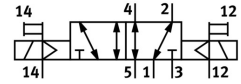
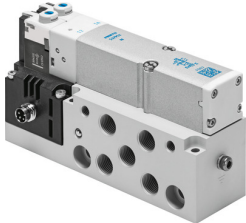


# Air solenoid valve VMPA2-M1H-J-G1/8-PI

FESTO

Part number: 537964



[PDF](#) General operating condition

## Data sheet

| Feature                                      | Value   |
|--|---|
| Valve function                               | 5/2, bistable   |
| Actuation type                               | Electrical  |
| Valve size                                   | 20 mm   |
| Standard nominal flow rate                   | 670 l/min   |
| Pneumatic working port                       | G1/8  |
| Operating voltage                            | 24V DC  |
| Operating pressure                           | 0.3 MPa ... 0.8 MPa                                   |
| Operating pressure                           | 3 bar ... 8 bar                                       |
| Structural design                            | Piston gate valve                                     |
| Certification                                | c UL us - Recognized (OL)                             |
| CE marking (see declaration of conformity)   | As per EU EMC directive<br>As per EU RoHS directive   |
| UKCA marking (see declaration of conformity) | To UK instructions for EMC<br>To UK RoHS instructions |
| Degree of protection                         | IP65<br>In mounted state<br>as per IEC 60529          |
| Exhaust air function                         | With flow control option                              |
| Sealing principle                            | Soft  |
| Mounting position                            | Any   |
| Manual override                              | Detenting<br>Non-detenting                            |
| Type of control                              | Pilot-controlled                                      |
| Pilot air supply port                        | Internal  |
| Flow direction                               | Non-reversible  |
| Symbol                                       | 00991067  |
| Lap  | Overlap   |
| Signal status display                        | yes   |
| Pilot pressure MPa                           | 0.3 MPa ... 0.8 MPa                                   |
| Pilot pressure                               | 3 bar ... 8 bar                                       |
| Suitability for vacuum                       | no  |
| Standard nominal flow rate with QS-8         | 670 l/min   |
| On switching time                            | 9 ms  |
| Changeover time                              | 22 ms   |
| Max. positive test pulse with 0 signal       | 400 µs  |
| Max. negative test pulse on 1 signal         | 900 µs  |
| Permissible voltage fluctuations             | +/- 25 %  |

| Feature                                   | Value  |
|---|--|
| Operating medium                          | Compressed air as per ISO 8573-1:2010 [7:4:4]  |
| Information on operating and pilot media  | Operation with oil lubrication possible (required for further use)                   |
| Vibration resistance                      | Transport application test with severity level 2 as per FN 942017-4 and EN 60068-2-6 |
| Shock resistance                          | Shock test with severity level 2 as per FN 942017-5 and EN 60068-2-27                |
| Corrosion resistance class (CRC)          | 1 - Low corrosion stress   |
| LABS (PWIS) conformity                    | VDMA24364-B1/B2-L  |
| Storage temperature                       | -20 °C ... 40 °C   |
| Temperature of medium                     | -5 °C ... 50 °C  |
| Relative air humidity                     | Max. 90 % at 40 °C   |
| Ambient temperature                       | -5 °C ... 50 °C  |
| Max. tightening torque for valve mounting | 0.65 Nm  |
| Product weight                            | 325 g  |
| Electrical connection                     | 4-pin<br>M8x1<br>Plug<br>as per EN 60947-5-2   |
| Type of mounting                          | With through-hole  |
| Pneumatic connection 1                    | G1/8   |
| Pneumatic connection 2                    | G1/8   |
| Pneumatic connection 3                    | G1/8   |
| Pneumatic connection 4                    | G1/8   |
| Pneumatic connection 5                    | G1/8   |
| Note on materials                         | RoHS-compliant   |
| Seals material                            | NBR  |
| Housing material                          | Die-cast aluminum  |