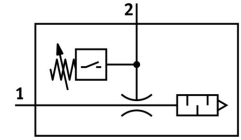
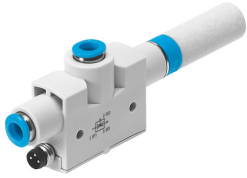


# Vacuum generator VN-07-L-T4-PQ2-VQ2-O1-P

Part number: 536802

FESTO



General operating condition

## Data sheet

| Feature                                      | Value   |
|--|---|
| Nominal width of Laval nozzle                | 0.7 mm  |
| Width dimension                              | 16 mm   |
| Muffler construction type                    | Open  |
| Mounting position                            | Any   |
| Ejector characteristics                      | High suction rate<br>Standard                                       |
| Integrated function                          | Pressure sensor<br>Pneumatic muffler open                           |
| Structural design                            | T-shape   |
| Short-circuit protection                     | Pulsed  |
| Measured variable                            | Relative pressure   |
| Measuring principle                          | Piezoresistive  |
| Method of measurement                        | Relative  |
| Switching element function                   | N/O contact   |
| Switching function                           | Threshold value comparator<br>Threshold value with fixed hysteresis |
| Symbol                                       | 00991917  |
| Reverse polarity protection                  | for all electrical connections                                      |
| Display type                                 | LED   |
| Setting range threshold value                | -0.1 MPa ... 0 MPa  |
| Setting options                              | Teach-in  |
| Switching status indication                  | LED   |
| Setting range threshold value                | -1 bar ... 0 bar  |
| Threshold value setting range                | -14.5 psi ... 0 psi   |
| Operating pressure for max. suction rate     | 0.4 MPa   |
| Operating pressure for max. suction rate     | 4 bar   |
| Operating pressure for max. suction rate     | 58 psi  |
| Operating pressure                           | 0.1 MPa ... 0.8 MPa   |
| Operating pressure                           | 1 bar ... 8 bar   |
| Operating pressure                           | 14.5 psi ... 116 psi  |
| Nominal operating pressure                   | 0.6 MPa   |
| Nominal operating pressure                   | 6 bar   |
| Nominal operating pressure                   | 87 psi  |
| Max. suction rate with respect to atmosphere | 30.9 l/min  |
| Switch-off time                              | ≤4 ms   |
| On time                                      | ≤4 ms   |

| Feature                                      | Value  |
|--|--|
| DC operating voltage range                   | 15 V ... 30 V                                  |
| Inductive protective circuit                 | Adapted to MZ, MY and ME coils                 |
| Max. output current                          | 100 mA   |
| Residual current                             | ≤0.3 mA  |
| Residual ripple                              | 10 %   |
| Switching output                             | PNP  |
| Voltage drop                                 | ≤1.5 V   |
| Overload protection                          | Available                                      |
| Certification                                | RCM compliance mark                            |
| KC characters                                | KC EMC   |
| CE marking (see declaration of conformity)   | As per EU EMC directive                        |
| UKCA marking (see declaration of conformity) | To UK instructions for EMC                     |
| Operating medium                             | Compressed air as per ISO 8573-1:2010 [7:4:4]  |
| Information on operating and pilot media     | Operation with oil lubrication not possible    |
| Corrosion resistance class (CRC)             | 1 - Low corrosion stress                       |
| LABS (PWIS) conformity                       | VDMA24364-B1/B2-L                              |
| Temperature of medium                        | 0 °C ... 60 °C                                 |
| Cleaning advice                              | Soap suds                                      |
| Noise level at nominal operating pressure    | 63 dB(A)                                       |
| Degree of protection                         | IP40   |
| Ambient temperature                          | 0 °C ... 50 °C                                 |
| Max. tightening torque                       | 0.6 Nm   |
| Pressure measuring range                     | -0.1 MPa ... 0 MPa                             |
| Pressure measuring range                     | -1 bar ... 0 bar                               |
| Pressure measuring range                     | -14.5 psi ... 0 psi                            |
| Product weight                               | 36 g   |
| Accuracy in ± % FS                           | 1.5 %FS  |
| Hysteresis in ± %FS                          | 2 %FS  |
| Long-term drift                              | ±0.5 % FS max.                                 |
| Temperature coefficient of switching point   | 0.05 %/K                                       |
| Electrical connection                        | 3-pin<br>M8                                    |
| Type of mounting                             | With through-hole                              |
| Pneumatic connection 1                       | QS-6   |
| Pneumatic connection 3                       | Pneumatic muffler open                         |
| Vacuum connection                            | QS-6   |
| Seals material                               | NBR  |
| Female nozzle material                       | POM  |
| Housing material                             | POM-reinforced                                 |
| Fiber-optic cable                            | PC   |
| Muffler material                             | PE   |
| Material of plug housing                     | Brass<br>PA<br>Chrome-plated and nickel-plated |
| Material of jet nozzle                       | Wrought aluminum alloy                         |
| Material of keypad                           | POM  |
| Material of pneumatic fitting                | Brass<br>Nickel-plated                         |