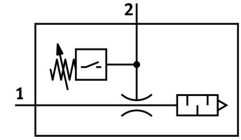
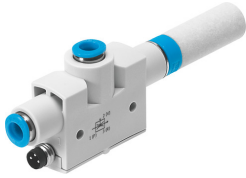


Vacuum generator VN-10-L-T4-PQ2-VQ2-O2-P

Part number: 536807

FESTO



General operating condition

Data sheet

| Feature | Value |
|--|--|
| Nominal width of Laval nozzle | 0.95 mm |
| Width dimension | 16 mm |
| Muffler construction type | Open |
| Mounting position | Any |
| Ejector characteristics | High suction rate Standard |
| Integrated function | Pressure sensor Pneumatic muffler open |
| Structural design | T-shape |
| Short-circuit protection | Pulsed |
| Measured variable | Relative pressure |
| Measuring principle | Piezoresistive |
| Method of measurement | Relative |
| Switching element function | N/O contact |
| Switching function | Threshold value comparator Threshold value with variable hysteresis |
| Symbol | 00991917 |
| Reverse polarity protection | for all electrical connections |
| Display type | LED |
| Setting range threshold value | -0.1 MPa ... 0 MPa |
| Setting options | Teach-in |
| Switching status indication | LED |
| Setting range threshold value | -1 bar ... 0 bar |
| Threshold value setting range | -14.5 psi ... 0 psi |
| Operating pressure for max. suction rate | 0.5 MPa |
| Operating pressure for max. suction rate | 5 bar |
| Operating pressure for max. suction rate | 72.5 psi |
| Operating pressure | 0.1 MPa ... 0.8 MPa |
| Operating pressure | 1 bar ... 8 bar |
| Operating pressure | 14.5 psi ... 116 psi |
| Nominal operating pressure | 0.6 MPa |
| Nominal operating pressure | 6 bar |
| Nominal operating pressure | 87 psi |
| Max. suction rate with respect to atmosphere | 41.5 l/min |
| Switch-off time | ≤4 ms |
| On time | ≤4 ms |

| Feature | Value |
|--|--|
| DC operating voltage range | 15 V ... 30 V |
| Inductive protective circuit | Adapted to MZ, MY and ME coils |
| Max. output current | 100 mA |
| Residual current | ≤0.3 mA |
| Residual ripple | 10 % |
| Switching output | PNP |
| Voltage drop | ≤1.5 V |
| Overload protection | Available |
| Certification | RCM compliance mark |
| KC characters | KC EMC |
| CE marking (see declaration of conformity) | As per EU EMC directive |
| UKCA marking (see declaration of conformity) | To UK instructions for EMC |
| Operating medium | Compressed air as per ISO 8573-1:2010 [7:4:4] |
| Information on operating and pilot media | Operation with oil lubrication not possible |
| Corrosion resistance class (CRC) | 1 - Low corrosion stress |
| LABS (PWIS) conformity | VDMA24364-B1/B2-L |
| Temperature of medium | 0 °C ... 60 °C |
| Cleaning advice | Soap suds |
| Noise level at nominal operating pressure | 66 dB(A) |
| Degree of protection | IP40 |
| Ambient temperature | 0 °C ... 50 °C |
| Max. tightening torque | 0.6 Nm |
| Pressure measuring range | -0.1 MPa ... 0 MPa |
| Pressure measuring range | -1 bar ... 0 bar |
| Pressure measuring range | -14.5 psi ... 0 psi |
| Product weight | 36 g |
| Accuracy in ± % FS | 1.5 %FS |
| Long-term drift | ±0.5 % FS max. |
| Temperature coefficient of switching point | 0.05 %/K |
| Electrical connection | 3-pin M8 |
| Type of mounting | With through-hole |
| Pneumatic connection 1 | QS-6 |
| Pneumatic connection 3 | Pneumatic muffler open |
| Vacuum connection | QS-6 |
| Seals material | NBR |
| Female nozzle material | POM |
| Housing material | POM-reinforced |
| Fiber-optic cable | PC |
| Muffler material | PE |
| Material of plug housing | Brass PA Chrome-plated and nickel-plated |
| Material of jet nozzle | Wrought aluminum alloy |
| Material of keypad | POM |
| Material of pneumatic fitting | Brass Nickel-plated |