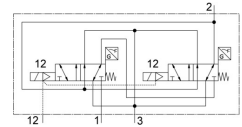
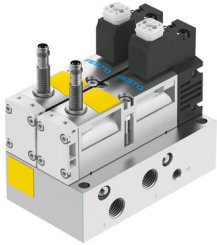


# Control block VOFA-L26-T32C-MZ-G14-1C1-APP

FESTO

Part number: 8162034



[PDF](#) General operating condition

## Data sheet

| Feature                                      | Value  |
|--|--|
| Valve function                               | 3/2, closed, monostable  |
| Actuation type                               | Electrical   |
| Width  | 65 mm  |
| Standard nominal flow rate                   | 1050 l/min   |
| Pneumatic working port                       | G1/4   |
| Operating voltage                            | 24V DC   |
| Operating pressure                           | 0 MPa ... 1 MPa  |
| Operating pressure                           | 0 bar ... 10 bar   |
| Structural design                            | Piston gate valve  |
| Reset method                                 | Mechanical spring  |
| Degree of protection                         | IP65<br>NEMA 4   |
| CE marking (see declaration of conformity)   | As per EU EMC directive<br>as per EU machinery directive   |
| UKCA marking (see declaration of conformity) | To UK instructions for EMC<br>To UK instructions for machines  |
| Exhaust air function                         | With flow control option   |
| Sealing principle                            | Soft   |
| Mounting position                            | Any  |
| Conforms to standard                         | EN 60947-5-2   |
| Manual override                              | None   |
| Type of control                              | Pilot-controlled   |
| Pilot air supply port                        | External   |
| Flow direction                               | Non-reversible   |
| Symbol                                       | 00997399   |
| Measuring principle                          | Inductive  |
| Lap  | Overlap  |
| Sensor reverse polarity protection           | For all electrical connections   |
| Safety function                              | Exhausting<br>Tamper protection, protection against unexpected start-up  |
| Performance Level (PL)                       | Exhaust/up to category 4, performance level e<br>Protection against manipulation, protection against unexpected start-up/up to category 4, performance level e |
| Note on forced dynamization                  | Switching frequency at least once a week   |
| Signal status display                        | With accessories   |
| Switching position sensing                   | Normal position with sensor  |
| Sensor switching status indication           | LED  |

| Feature  | Value  |
|--|--|
| Pilot pressure MPa   | 0.3 MPa ... 1 MPa  |
| Pilot pressure   | 3 bar ... 10 bar   |
| Suitability for vacuum                                       | no   |
| Standard flow rate exhaust 6 → 0 bar                         | 2650 l/min   |
| Standard flow rate exhaust 6 → 0 bar in the event of a fault | 1050 l/min   |
| Switching time off   | 54 ms  |
| On switching time  | 24 ms  |
| Pneumatic valve - sensor ON switching time                   | 58 ms  |
| Pneumatic valve - sensor switching time off                  | 11 ms  |
| Duty cycle   | 100%   |
| Max. positive test pulse with 0 signal                       | 1000 µs  |
| Max. negative test pulse on 1 signal                         | 800 µs   |
| Switching output   | PNP  |
| Coil characteristics   | 24 V DC: 1.8 W   |
| Permissible voltage fluctuations                             | -15 % / +10 %  |
| Operating medium   | Compressed air as per ISO 8573-1:2010 [7:4:4]  |
| Information on operating and pilot media                     | Operation with oil lubrication possible (required for further use)                   |
| Vibration resistance   | Transport application test with severity level 2 as per FN 942017-4 and EN 60068-2-6 |
| Shock resistance   | Shock test with severity level 2 as per FN 942017-5 and EN 60068-2-27                |
| Corrosion resistance class (CRC)                             | 0 - No corrosion stress  |
| LABS (PWIS) conformity                                       | VDMA24364-B1/B2-L  |
| Max. magnetic interference field                             | 60 mT  |
| Temperature of medium  | -5 °C ... 50 °C  |
| Noise level  | 85 dB(A)   |
| Protection against direct and indirect contact               | PELV<br>Protection class as per EN 60950/IEC 950                                     |
| Pilot medium   | Compressed air as per ISO 8573-1:2010 [7:4:4]  |
| Ambient temperature  | -5 °C ... 50 °C  |
| Nominal altitude of use above sea level                      | 1000 m as per VDE 0580   |
| Product weight   | 1134 g   |
| DC sensor operating voltage range                            | 10 V ... 30 V  |
| Sensor short circuit protection                              | Pulsed   |
| Sensor idle current  | ≤10 mA   |
| Max. output current, sensor                                  | 200 mA   |
| Sensor max. switching frequency                              | 5000 Hz  |
| Sensor residual ripple                                       | ± 10 %   |
| Sensor voltage drop  | ≤2 V   |
| Electrical connection  | Form C<br>as per EN 175301-803<br>Without PE conductor                               |
| Sensor connection  | Plug<br>3-pin<br>M8x1  |
| Type of mounting   | With through-hole  |
| Pneumatic connection 1                                       | G1/4   |
| Pneumatic connection 2                                       | G1/4   |
| Pneumatic connection 3                                       | G1/4   |
| Note on materials  | RoHS-compliant   |
| Seals material   | FPM<br>HNBR<br>NBR   |
| Housing material   | Die-cast aluminum<br>PA  |
| Material of screws   | Steel, galvanized  |

| Feature                    | Value       |
|----------------------------|-------------|
| Switching element function | N/C contact |