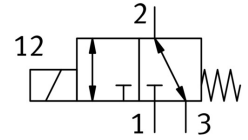
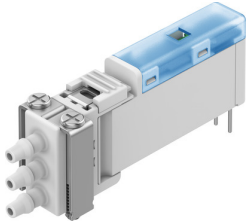



# Solenoid valve

## VOVK-BT6-M32C-MN-1T1P-B3.2F

FESTO

Part number: 8122785



 [General operating condition](#)

## Data sheet

Feature	Value
Valve function	3/2, closed, monostable
Actuation type	Electrical
Width	5.9 mm
Standard nominal flow rate	5.5 l/min
Pneumatic working port	for tubing I.D. 2 mm
Operating pressure	-0.1 MPa ... 0.7 MPa
Operating pressure	-1 bar ... 7 bar
Operating pressure	-14.5 psi ... 100 psi
Information on operating pressure	Operating pressure at port 3: -1 to 0 bar only
Structural design	Connection direction to the front Poppet valve with return spring
Reset method	Mechanical spring
Degree of protection	IP40
Nominal width	0.36 mm
Exhaust air function	With flow control option
Sealing principle	Soft
Mounting position	Any
Manual override	None
Type of control	Electrical
Flow direction	Reversible
Symbol	00992967
Cv value	0.006 Gal/min US
Max. switching frequency	10 Hz
Switching time off	≤6 ms
Note on switching time off	At $-1 < p < 6$ bar
On switching time	≤13 ms
Note on switching time on	≤6 ms at $0 < p < 6$ bar, ≤13 ms at $-1 < p < 0$ bar
Duty cycle	100% within 500 h
Electrical power consumption	≤0.5 W
Nominal operating voltage DC	24 V
Permissible voltage fluctuations	+/- 10 %
Operating medium	Compressed air to ISO 8573-1:2010 [6:4:1]
Information on operating and pilot media	Operation with oil lubrication not possible
Corrosion resistance class (CRC)	1 - Low corrosion stress
LABS (PWIS) conformity	VDMA24364 zone III
Temperature of medium	5 °C ... 50 °C

<b>Feature</b>	<b>Value</b>
Relative air humidity	70 %
Note on relative air humidity	at ambient temperature
Ambient temperature	5 °C ... 50 °C
Product weight	4.5 g
Electrical connection	2-pin
Type of mounting	With through-hole
Pneumatic connection 1	For tubing I.D. 2 mm
Pneumatic connection 3	For tubing I.D. 2 mm
Note on materials	RoHS-compliant
Housing material	PBT
Material of spring	High-alloy stainless steel