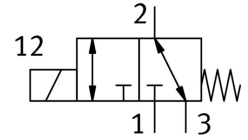
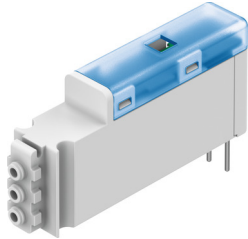


Solenoid valve

VOVK-BT6-M32C-MN-5T1P-FF

FESTO

Part number: 8122780



[General operating condition](#)

Data sheet

| Feature | Value |
|--|--|
| Valve function | 3/2, closed, monostable |
| Actuation type | Electrical |
| Width | 5.9 mm |
| Standard nominal flow rate | 5.5 l/min |
| Pneumatic working port | Sub-base |
| Operating pressure | -0.1 MPa ... 0.7 MPa |
| Operating pressure | -1 bar ... 7 bar |
| Operating pressure | -14.5 psi ... 100 psi |
| Information on operating pressure | Operating pressure at port 3: -1 to 0 bar only |
| Structural design | Connection direction to the front Poppet valve with return spring |
| Reset method | Mechanical spring |
| Degree of protection | IP40 |
| Nominal width | 0.36 mm |
| Exhaust air function | With flow control option |
| Sealing principle | Soft |
| Mounting position | Any |
| Manual override | None |
| Type of control | Electrical |
| Flow direction | Reversible |
| Symbol | 00992967 |
| Cv value | 0.006 Gal/min US |
| Max. switching frequency | 10 Hz |
| Switching time off | ≤6 ms |
| Note on switching time off | At $-1 < p < 6$ bar |
| On switching time | ≤13 ms |
| Note on switching time on | ≤6 ms at $0 < p < 6$ bar, ≤13 ms at $-1 < p < 0$ bar |
| Duty cycle | 100% within 500 h |
| Electrical power consumption | ≤0.5 W |
| Nominal operating voltage DC | 12 V |
| Permissible voltage fluctuations | +/- 10 % |
| Operating medium | Compressed air to ISO 8573-1:2010 [6:4:1] |
| Information on operating and pilot media | Operation with oil lubrication not possible |
| Corrosion resistance class (CRC) | 1 - Low corrosion stress |
| LABS (PWIS) conformity | VDMA24364 zone III |
| Temperature of medium | 5 °C ... 50 °C |

| Feature | Value |
|-------------------------------|----------------------------|
| Relative air humidity | 70 % |
| Note on relative air humidity | at ambient temperature |
| Ambient temperature | 5 °C ... 50 °C |
| Product weight | 4.5 g |
| Electrical connection | 2-pin |
| Type of mounting | With through-hole |
| Pneumatic connection 1 | Sub-base |
| Pneumatic connection 3 | Sub-base |
| Note on materials | RoHS-compliant |
| Housing material | PBT |
| Material of spring | High-alloy stainless steel |