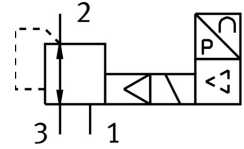



Proportional pressure control valve VPPE-3-1/8-6-010

FESTO

Part number: 539639



 General operating condition

Data sheet

Feature	Value
Nominal width pressurization	5 mm
Exhaust nominal width	2.5 mm
Actuation type	Electrical
Sealing principle	Soft
Mounting position	Any Preferably vertical
Structural design	Pilot-controlled piston control valve
Short-circuit protection	For all electrical connections
Safety instructions	VPPE safety position: if the supply cable breaks, the outlet pressure is maintained in uncontrolled form.
Symbol	00995303
Reverse polarity protection	for all electrical connections
Valve function	3-way proportional pressure control valve closed
Operating pressure	0.8 MPa
Operating pressure	≤8 bar
Pressure regulation range MPa	0.015 MPa ... 0.6 MPa
Pressure regulation range	0.15 bar ... 6 bar
Inlet pressure 1	6 bar ... 8 bar
Inlet pressure 1 MPa	0.6 MPa ... 0.8 MPa
Max. pressure hysteresis	0.015 MPa
Max. pressure hysteresis	0.15 bar
Standard nominal flow rate	850 l/min
Switching time off	1300 ms
On switching time	550 ms
DC operating voltage range	21.6 V ... 26.4 V
Max. current consumption	150 mA
Max. electrical power consumption	3.6 W
Residual ripple	10 %
Setpoint/actual values	Voltage type 0 - 10 V
Operating medium	Compressed air as per ISO 8573-1:2010 [7:4:4] Inert gas
Information on operating and pilot media	Operation with oil lubrication not possible
Certification	RCM compliance mark c UL us - Listed (OL)
KC characters	KC EMC

Feature	Value
CE marking (see declaration of conformity)	As per EU EMC directive As per EU RoHS directive
UKCA marking (see declaration of conformity)	To UK instructions for EMC To UK RoHS instructions
Certificate issuing authority	UL E322346
Corrosion resistance class (CRC)	2 - Moderate corrosion stress
LABS (PWIS) conformity	VDMA24364-B2-L
Temperature of medium	10 °C ... 50 °C
Degree of protection	IP65
Ambient temperature	10 °C ... 50 °C
Product weight	445 g
Linearity	1 %FS
Hysteresis	2.5 %FS
Reproducibility	0.5 %FS
Overall accuracy	2.25 %FS
Temperature coefficient	0.04 %/K
Electrical connection	4-pin M12x1 Plug Round design
Type of mounting	With through-hole
Pneumatic connection 1	G1/8
Pneumatic connection 2	G1/8
Note on materials	RoHS-compliant
Housing material	Wrought aluminum alloy
Diaphragm material	NBR