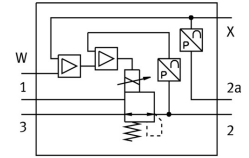


Proportional pressure control valve VPPL-3Q-3-Z-0L20H-V1-A-S1-4

Part number: 1635975

FESTO



[PDF General operating condition](#)

Data sheet

| Feature | Value |
|-----------------------------------|---|
| Nominal width pressurization | 3 mm |
| Exhaust nominal width | 3 mm |
| Actuation type | Electrical |
| Sealing principle | Soft |
| Mounting position | Any Preferably upright |
| Structural design | Directly controlled piston regulator |
| Short-circuit protection | no |
| Max. cable length | 30 m |
| Safety instructions | VPPL safety position: if the power supply cable breaks, the outlet pressure will drop to 0 bar. |
| Symbol | 00995268 |
| Reverse polarity protection | for all electrical connections |
| Reset method | Mechanical spring |
| Type of control | Direct |
| Valve function | 3-way proportional pressure control valve closed |
| Display type | LED display |
| Operating pressure | ≤2 MPa |
| Operating pressure | ≤20 bar |
| Pressure regulation range MPa | 0.02 MPa ... 2 MPa |
| Pressure regulation range | 0.2 bar ... 20 bar |
| Inlet pressure 1 | 0 bar ... 50 bar |
| Inlet pressure 1 MPa | 0 MPa ... 5 MPa |
| Max. pressure hysteresis | 0.01 MPa |
| Max. pressure hysteresis | 0.1 bar |
| Max. pressure hysteresis | 1.45 psi |
| b-value | 0.25 |
| C value | 0.8 l/sbar |
| Standard nominal flow rate | 245 l/min |
| Standard nominal flow rate 2-3 | 282 l/min |
| Switching time off | 654 ms |
| On switching time | 428 ms |
| DC operating voltage range | 21.6 V ... 27.6 V |
| Duty cycle | 100% |
| Max. electrical power consumption | 26.7 W |

| Feature | Value |
|--|--|
| Residual ripple | 10 % |
| Analog output signal range | 4 - 20 mA |
| Analog input signal range | 0 - 10 V |
| Setpoint/actual values | Voltage type 0 - 10 V |
| Operating medium | Compressed air as per ISO 8573-1:2010 [7:4:4] Inert gas |
| Information on operating and pilot media | Operation with oil lubrication not possible |
| Certification | c UL us - Listed (OL) |
| KC characters | KC EMC |
| CE marking (see declaration of conformity) | As per EU EMC directive |
| UKCA marking (see declaration of conformity) | To UK instructions for EMC |
| Corrosion resistance class (CRC) | 2 - Moderate corrosion stress |
| LABS (PWIS) conformity | VDMA24364 zone III |
| Temperature of medium | 5 °C ... 50 °C |
| Degree of protection | IP65 |
| Ambient temperature | 5 °C ... 50 °C |
| Storage temperature | -10 °C ... 60 °C |
| Product weight | 1100 g |
| Linearity error in ± % FS | 0.5 %FS |
| Overall accuracy | 0.5% FS |
| Temperature coefficient | 0.04 %/K |
| Repetition accuracy in ± %FS | 0.5 %FS |
| Electrical connection, diagnostic interface | Socket, M12, 5-pin, A-coded |
| Electrical connection IN | Plug, M12, 5-pin, A-coded |
| Electrical connection OUT | Plug, M12, 5-pin, A-coded |
| Type of mounting | With through-hole |
| Pneumatic connection 1 | Flange G1/4 |
| Pneumatic connection 2 | Flange |
| Pneumatic connection 3 | Flange |
| Note on materials | RoHS-compliant |
| Housing material | Wrought aluminum alloy, anodized |