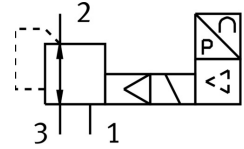



# Proportional pressure control valve VPPM-6L-L-1-G18-0L10H-V1P

FESTO

Part number: 554044



 General operating condition

## Data sheet

Feature	Value
Nominal width pressurization	6 mm
Exhaust nominal width	4,5 mm
Actuation type	Electrical
Sealing principle	Soft
Mounting position	Any
Structural design	Pilot-controlled diaphragm regulator
Short-circuit protection	For all electrical connections
Safety instructions	VPPM safety position: if the supply cable breaks, the outlet pressure is maintained in uncontrolled form.
Symbol	00995303
Reverse polarity protection	for all electrical connections
Reset method	Mechanical spring
Type of control	Pilot-controlled
Valve function	3-way proportional pressure control valve
Display type	LED
Pressure regulation range MPa	0.01 MPa ... 1 MPa
Pressure regulation range	0.1 bar ... 10 bar
Inlet pressure 1	0 bar ... 11 bar
Inlet pressure 1 MPa	0 MPa ... 1.1 MPa
Max. pressure hysteresis	0.05 bar
Standard nominal flow rate	1400 l/min
DC operating voltage range	21.6 V ... 26.4 V
Max. current consumption	300 mA
Duty cycle	100%
Max. electrical power consumption	7 W
Residual ripple	10 %
Switching output	PNP
Analog output signal range	0 - 10 V
Analog input signal range	0 - 10 V
Operating medium	Compressed air as per ISO 8573-1:2010 [7:4:4] Inert gas
Information on operating and pilot media	Operation with oil lubrication not possible
Certification	RCM compliance mark c UL us - Listed (OL)
KC characters	KC EMC

Feature	Value
CE marking (see declaration of conformity)	As per EU EMC directive As per EU RoHS directive
UKCA marking (see declaration of conformity)	To UK instructions for EMC To UK RoHS instructions
Certificate issuing authority	UL E322346
Corrosion resistance class (CRC)	2 - Moderate corrosion stress
LABS (PWIS) conformity	VDMA24364-B1/B2-L
Temperature of medium	10 °C ... 50 °C
Degree of protection	IP65
Ambient temperature	0 °C ... 60 °C
Product weight	400 g
Linearity	1 %FS
Hysteresis	0.5 %FS
Reproducibility	0.5 %FS
Overall accuracy	1.25 %FS
Temperature coefficient	0.04 %/K
Repetition accuracy FS	0.5 %
Electrical connection	8-pin M12 Plug
Type of mounting	Optionally: With through-hole With accessories
Pneumatic connection 1	G1/8
Pneumatic connection 2	G1/8
Pneumatic connection 3	G1/8
Note on materials	RoHS-compliant
Housing material	Wrought aluminum alloy Anodized