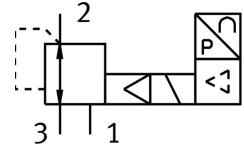



Proportional pressure control valve VPPM-6L-L-1-G18-0L2H-LK-S1

FESTO

Part number: 8024258



 General operating condition

Data sheet

| Feature | Value |
|--|---|
| Nominal width pressurization | 6 mm |
| Exhaust nominal width | 4,5 mm |
| Actuation type | Electrical |
| Sealing principle | Soft |
| Mounting position | Any |
| Structural design | Pilot-controlled diaphragm regulator |
| Short-circuit protection | For all electrical connections |
| Safety instructions | VPPM safety position: if the supply cable breaks, the outlet pressure is maintained in uncontrolled form. |
| Symbol | 00995303 |
| Reverse polarity protection | for all electrical connections |
| Reset method | Mechanical spring |
| Type of control | Pilot-controlled |
| Valve function | 3-way proportional pressure control valve |
| Display type | LED |
| Pressure regulation range MPa | 0.002 MPa ... 0.2 MPa |
| Pressure regulation range | 0.02 bar ... 2 bar |
| Inlet pressure 1 | 0 bar ... 4 bar |
| Inlet pressure 1 MPa | 0 MPa ... 0.4 MPa |
| Max. pressure hysteresis | 0.01 bar |
| Standard nominal flow rate | 380 l/min |
| DC operating voltage range | 18 V ... 30 V |
| Max. current consumption | 300 mA |
| Duty cycle | 100% |
| Max. electrical power consumption | 7 W |
| Protocol | I-Port IO-Link® |
| Residual ripple | 10 % |
| Operating medium | Compressed air as per ISO 8573-1:2010 [7:4:4] Inert gas |
| Information on operating and pilot media | Operation with oil lubrication not possible |
| Certification | RCM compliance mark c UL us - Listed (OL) |
| KC characters | KC EMC |
| CE marking (see declaration of conformity) | As per EU EMC directive As per EU RoHS directive |

| Feature | Value |
|--|---|
| UKCA marking (see declaration of conformity) | To UK instructions for EMC To UK RoHS instructions |
| Certificate issuing authority | UL E322346 |
| Corrosion resistance class (CRC) | 2 - Moderate corrosion stress |
| LABS (PWIS) conformity | VDMA24364-B1/B2-L |
| Temperature of medium | 10 °C ... 50 °C |
| Degree of protection | IP65 |
| Ambient temperature | 0 °C ... 60 °C |
| Product weight | 400 g |
| Linearity | 1 %FS |
| Hysteresis | 0.5 %FS |
| Reproducibility | 0.5 %FS |
| Overall accuracy | 1.25 %FS |
| Temperature coefficient | 0.04 %/K |
| Repetition accuracy FS | 0.5 % |
| IO-Link®, protocol version | Device V 1.1 |
| IO-Link®, communication mode | COM1 (4.8 kBd), COM2 (38.4 kBd), COM3 (230.4 kBd) |
| IO-Link®, port class | A |
| IO-Link®, process data width OUT | 2 Byte |
| IO-Link®, process data width IN | 2 Byte |
| IO-Link®, minimum cycle time | 0.5 ms |
| Type of mounting | Optionally: With through-hole With accessories |
| Pneumatic connection 1 | G1/8 |
| Pneumatic connection 2 | G1/8 |
| Pneumatic connection 3 | G1/8 |
| Note on materials | RoHS-compliant |
| Housing material | Wrought aluminum alloy Anodized |