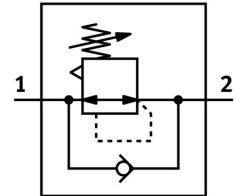
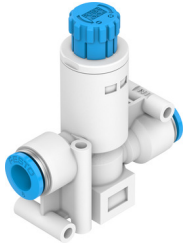


Pressure regulator VRPA-C-Q6-E

Part number: 8086001

FESTO



 General operating condition

Data sheet

Feature	Value
Controller function	Outlet pressure constant With secondary exhausting With return flow function
Pneumatic connection 1	QS-6
Pneumatic connection 2	QS-6
Type of mounting	With through-hole
Standard nominal flow rate	90 l/min
Ambient temperature	0 °C ... 60 °C
Housing material	PBT
Operating medium	Compressed air as per ISO 8573-1:2010 [7:4:4]
Mounting position	Any
Actuation type	Manual
Adjusting element	Rotary knob with detent
Symbol	00991559
Pressure regulation range MPa	0.1 MPa ... 0.8 MPa
Pressure regulation range	1 bar ... 8 bar
Pressure regulation range psi	14.5 psi ... 116 psi
Information on operating and pilot media	Operation with oil lubrication possible (required for further use)
LABS (PWIS) conformity	VDMA24364-B2-L
Cleanroom class	Class 4 according to ISO 14644-1
Product weight	20 g
Note on materials	RoHS-compliant
Static seal material	NBR