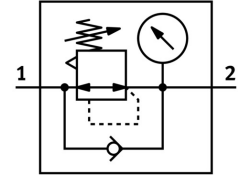


# Pressure regulator VRPA-CM-Q6-E

Part number: 8086004

FESTO



 General operating condition

## Data sheet

Feature	Value
Controller function	Outlet pressure constant With secondary exhausting With return flow function
Pneumatic connection 1	QS-6
Pneumatic connection 2	QS-6
Type of mounting	With through-hole
Standard nominal flow rate	90 l/min
Ambient temperature	0 °C ... 60 °C
Housing material	PBT
Operating medium	Compressed air as per ISO 8573-1:2010 [7:4:4]
Mounting position	Any
Actuation type	Manual
Adjusting element	Rotary knob with detent
Symbol	00991558
Pressure gauge	with pressure gauge
Pressure regulation range MPa	0.1 MPa ... 0.8 MPa
Pressure regulation range	1 bar ... 8 bar
Pressure regulation range psi	14.5 psi ... 116 psi
Information on operating and pilot media	Operation with oil lubrication possible (required for further use)
LABS (PWIS) conformity	VDMA24364-B2-L
Cleanroom class	Class 4 according to ISO 14644-1
Product weight	23 g
Note on materials	RoHS-compliant
Static seal material	NBR