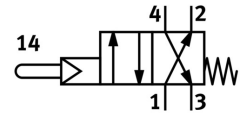


Stem actuated valve VS-4-1/8

Part number: 3394

FESTO



[PDF General operating condition](#)

Data sheet

Feature	Value
Valve function	4/2, monostable
Actuation type	Mechanical
Standard nominal flow rate	140 l/min ... 147 l/min
Pneumatic working port	G1/8
Operating pressure	0.35 MPa ... 0.8 MPa
Operating pressure	3.5 bar ... 8 bar
Structural design	Plate seat
Reset method	Mechanical spring
Nominal width	3.5 mm
Exhaust air function	With flow control option
Sealing principle	Soft
Mounting position	Any
Type of control	Pilot-controlled
Pilot air supply port	Internal
Flow direction	Non-reversible
Symbol	00991115
Pilot medium	Compressed air as per ISO 8573-1:2010 [:-:-]
Note on forced dynamization	Switching frequency min. 1/year
Explosion prevention and protection	Zone 1 (ATEX) Zone 2 (ATEX) Zone 21 (ATEX) Zone 22 (ATEX)
Operating medium	Compressed air as per ISO 8573-1:2010 [:-:-]
Information on operating and pilot media	Operation with oil lubrication possible (required for further use)
Corrosion resistance class (CRC)	2 - Moderate corrosion stress
LABS (PWIS) conformity	VDMA24364-B1/B2-L
Temperature of medium	-10 °C ... 60 °C
Ambient temperature	-10 °C ... 60 °C
Actuating force	3.2 N
Product weight	220 g
Type of mounting	With through-hole
Pneumatic connection 1	G1/8
Pneumatic connection 2	G1/8
Pneumatic connection 3	G1/8
Pneumatic connection 4	G1/8
Note on materials	RoHS-compliant

Feature	Value
Seals material	NBR
Housing material	Aluminum Anodized