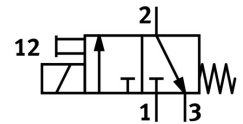
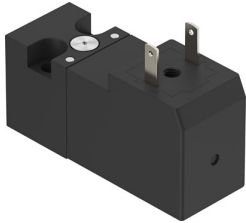


Solenoid valve

VSCS-B-M32-MD-WA-1E1-8

Part number: 8137328

FESTO



[General operating condition](#)

Data sheet

Feature	Value
Valve function	3/2, closed, monostable
Actuation type	Electrical
Width	15 mm
Standard nominal flow rate	13.5 l/min
Pneumatic working port	Sub-base, size 15 mm according to ISO 15218
Operating voltage	24V DC
Operating pressure	0.15 MPa ... 0.8 MPa
Operating pressure	1.5 bar ... 8 bar
Operating pressure	21.75 psi ... 116 psi
Reset method	Mechanical spring
Degree of protection	IP65
Sealing principle	Soft
Mounting position	Any
Conforms to standard	ISO 15218
Manual override	Detenting Non-detenting
Type of control	Direct
Flow direction	Non-reversible
Symbol	00991308
Lap	Underlap
Note on forced dynamization	Switching frequency at least once a week
Switching time off	6 ms
On switching time	8 ms
Duty cycle	100%
Coil characteristics	24 V DC: 1.3 W
Permissible voltage fluctuations	+/- 10 %
Operating medium	Compressed air as per ISO 8573-1:2010 [7:4:4]
Information on operating and pilot media	Operation with oil lubrication possible (required for further use)
Vibration resistance	Transport application test with severity level 1 as per FN 942017-4 and EN 60068-2-6
Shock resistance	Shock test with severity level 1 as per FN 942017-5 and EN 60068-2-27
Corrosion resistance class (CRC)	2 - Moderate corrosion stress
LABS (PWIS) conformity	VDMA24364-C1-L
Temperature of medium	-5 °C ... 50 °C
Ambient temperature	-5 °C ... 50 °C
Electrical connection	Connection diagram form C as per industrial standard, 9.4 mm

Feature	Value
Pneumatic connection 1	Sub-base
Pneumatic connection 2	Sub-base
Pneumatic connection 3	Sub-base
Note on materials	RoHS-compliant
Seals material	NBR