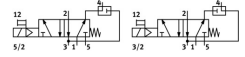
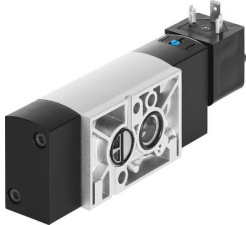


Air solenoid valve VSNC-FTC-M52-MD-G14-FN-1A1

FESTO

Part number: 577297



[PDF](#) General operating condition

Data sheet

Feature	Value
Valve function	5/2 or 3/2 switchable
Actuation type	Electrical
Width	32 mm
Standard nominal flow rate	800 l/min
Pneumatic working port	NAMUR connection diagram
Operating voltage	24V DC
Operating pressure	0.25 MPa ... 0.8 MPa
Operating pressure	2.5 bar ... 8 bar
Structural design	Plate seat
Reset method	Mechanical spring
Certificate issuing authority	DNVGL-TAA000011J
Degree of protection	IP65 IP67 With plug socket as per IEC 60529
Exhaust air function	With flow control option
Sealing principle	Soft
Mounting position	Any
Conforms to standard	VDI/VDE 3845 (NAMUR)
Manual override	Detenting Non-detenting
Type of control	Pilot-controlled
Pilot air supply port	Internal
Flow direction	Non-reversible
Symbol	00991831
Lap	Underlap
Signal status display	With accessories
b-value	0.15
C value	3.96 l/sbar
Standard nominal flow rate, exhaust air return 4->3	110 l/min
Switching time off	120 ms
On switching time	16 ms
Duty cycle	100%
Coil characteristics	24 V DC: 0.7 W
Permissible voltage fluctuations	+/- 10 %

Feature	Value
Explosion prevention and protection	Observe the information on the certificate Zone 1 (ATEX) Zone 2 (ATEX) Zone 21 (ATEX) Zone 22 (ATEX)
Operating medium	Compressed air as per ISO 8573-1:2010 [7:4:4]
Information on operating and pilot media	Operation with oil lubrication possible (required for further use)
Corrosion resistance class (CRC)	2 - Moderate corrosion stress
LABS (PWIS) conformity	VDMA24364-B2-L
Temperature of medium	-20 °C ... 60 °C
Ambient temperature	-20 °C ... 60 °C
Product weight	495 g
Electrical connection	Form A as per EN 175301-803
Type of mounting	With through-hole
Venting hole connection	Not ducted
Pneumatic connection 1	G1/4
Pneumatic connection 2	NAMUR connection diagram
Pneumatic connection 3	G1/4
Pneumatic connection 4	NAMUR connection diagram
Pneumatic connection 5	G1/4
Note on materials	RoHS-compliant
Seals material	NBR
Housing material	Wrought aluminum alloy
Material of screws	Steel, galvanized