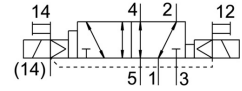
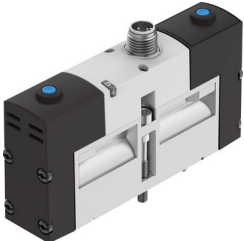


Air solenoid valve VSVA-B-D52-ZH-A1-1R5L

Part number: 534548

FESTO



General operating condition

Data sheet

| Feature | Value |
|--|---|
| Valve function | 5/2, bistable, dominant |
| Actuation type | Electrical |
| Width | 26 mm |
| Standard nominal flow rate | 1100 l/min |
| Pneumatic working port | Sub-base, size 26 mm according to ISO 15407-1 |
| Operating voltage | 24V DC |
| Operating pressure | -0.09 MPa ... 1.6 MPa |
| Operating pressure | -0.9 bar ... 16 bar |
| Structural design | Piston gate valve |
| Certification | RCM compliance mark c UL us - Recognized (OL) |
| CE marking (see declaration of conformity) | As per EU EMC directive |
| UKCA marking (see declaration of conformity) | To UK instructions for EMC To UK RoHS instructions |
| Degree of protection | IP65 NEMA 4 |
| Nominal width | 9 mm |
| Width dimension | 27 mm |
| Exhaust air function | With flow control option Via throttle plate Via individual sub-base |
| Sealing principle | Soft |
| Mounting position | Any |
| Conforms to standard | ISO 15407-1 |
| Manual override | Non-detenting |
| Type of control | Pilot-controlled |
| Pilot air supply port | External |
| Flow direction | Any |
| Symbol | 00992937 |
| Lap | Overlap |
| Reverse polarity protection | for all electrical connections |
| Additional functions | Holding current reduction Safety shut-down |
| Signal status display | LED |
| Pilot pressure MPa | 0.3 MPa ... 0.8 MPa |
| Pilot pressure | 3 bar ... 8 bar |
| Flow rate of pneumatic valve | 1400 l/min |

| Feature | Value |
|--|--|
| Flow rate of pneumatic valve on individual sub-base | 1100 l/min |
| Optimized flow rate of pneumatic valve pneumatically concatenated flow | 1100 l/min |
| Switching time changeover (dominant) | 25 ms |
| Duty cycle | 100% |
| Max. positive test pulse with 0 signal | 400 µs |
| Max. negative test pulse on 1 signal | 100 µs |
| Nominal pick-up current per solenoid coil | 110 mA to 20 ms |
| Nominal current with current reduction | 30 mA after 20 ms |
| Coil characteristics | 24 V DC: low-current phase 1.0 W, high-current phase 2.4 W |
| Permissible voltage fluctuations | +/- 10 % |
| Operating medium | Compressed air as per ISO 8573-1:2010 [7:4:4] |
| Information on operating and pilot media | Operation with oil lubrication possible (required for further use) |
| Vibration resistance | Transport application test with severity level 2 as per FN 942017-4 and EN 60068-2-6 |
| Shock resistance | Shock test with severity level 2 as per FN 942017-5 and EN 60068-2-27 |
| Corrosion resistance class (CRC) | 2 - Moderate corrosion stress |
| LABS (PWIS) conformity | VDMA24364-B1/B2-L |
| Temperature of medium | -5 °C ... 50 °C |
| Relative air humidity | 0 - 90 % |
| Protection against direct and indirect contact | PELV |
| Pilot medium | Compressed air as per ISO 8573-1:2010 [7:4:4] |
| Ambient temperature | -5 °C ... 50 °C |
| Max. tightening torque for valve mounting | 1.8 Nm ... 2.2 Nm |
| Product weight | 270 g |
| Electrical connection | 3-pin M12x1 Central plug Round design |
| Type of mounting | On sub-base With through-hole and screw |
| Pilot air port 12/14 | Sub-base, size 26 mm as per ISO 15407-1 |
| Pilot exhaust air port 82/84 | Ducted Not ducted as per standard Optionally: |
| Note on materials | RoHS-compliant |
| Seals material | FPM HNBR NBR |
| Housing material | Die-cast aluminum |