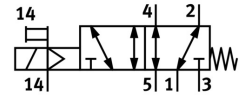
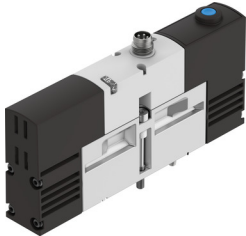


Air solenoid valve VSVA-B-M52-MZH-A2-1R2L

Part number: 534785

FESTO



[General operating condition](#)

Data sheet

Feature	Value
Valve function	5/2, monostable
Actuation type	Electrical
Width	18 mm
Standard nominal flow rate	550 l/min
Pneumatic working port	Sub-base, size 18 mm as per ISO 15407-1 Connecting plate size O2 according to VDMA 24563
Operating voltage	24V DC
Operating pressure	-0.09 MPa ... 1 MPa
Operating pressure	-0.9 bar ... 10 bar
Structural design	Piston gate valve
Reset method	Mechanical spring
Certification	C-Tick c UL us - Recognized (OL)
CE marking (see declaration of conformity)	As per EU EMC directive
UKCA marking (see declaration of conformity)	To UK instructions for EMC To UK RoHS instructions
Degree of protection	IP65
Nominal width	5 mm
Exhaust air function	With flow control option
Sealing principle	Soft
Mounting position	Any
Conforms to standard	ISO 15407-1 VDMA 24563
Manual override	Non-detenting
Type of control	Pilot-controlled
Pilot air supply port	External
Flow direction	Reversible
Symbol	00991190
Lap	Overlap
Reverse polarity protection	for all electrical connections
Additional functions	Holding current reduction Safety shut-down
Signal status display	LED
Pilot pressure MPa	0.3 MPa ... 0.8 MPa
Pilot pressure	3 bar ... 8 bar
Flow rate of pneumatic valve	750 l/min
Flow rate of pneumatic valve on individual sub-base	550 l/min

Feature	Value
Optimized flow rate of pneumatic valve pneumatically concatenated flow	550 l/min
Switching time off	34 ms
On switching time	12 ms
DC operating voltage range	21.6 V ... 26.4 V
Duty cycle	100%
Max. positive test pulse with 0 signal	500 µs
Max. negative test pulse on 1 signal	500 µs
Coil characteristics	24 V DC: low-current phase 1.0 W, high-current phase 2.4 W
Operating medium	Compressed air as per ISO 8573-1:2010 [7:4:4]
Information on operating and pilot media	Operation with oil lubrication possible (required for further use)
Vibration resistance	Transport application test with severity level 2 as per FN 942017-4 and EN 60068-2-6
Shock resistance	Shock test with severity level 2 as per FN 942017-5 and EN 60068-2-27
Corrosion resistance class (CRC)	2 - Moderate corrosion stress
LABS (PWIS) conformity	VDMA24364-B1/B2-L
Temperature of medium	-5 °C ... 50 °C
Relative air humidity	0 - 90 %
Protection against direct and indirect contact	PELV
Ambient temperature	-5 °C ... 50 °C
Max. tightening torque for valve mounting	0.9 Nm ... 1.1 Nm
Product weight	140 g
Electrical connection	4-pin M8x1 Central plug Round design
Type of mounting	On sub-base
Note on materials	RoHS-compliant