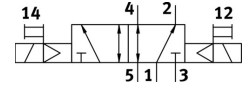
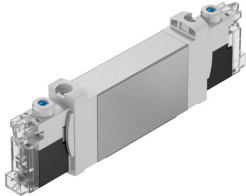



# Air solenoid valve VUVG-BK14-B52-T-F-1H2L-S

Part number: 8042572

FESTO



 General operating condition

## Data sheet

Feature	Value
Valve function	5/2, bistable
Actuation type	Electrical
Valve size	14 mm
Standard nominal flow rate	380 l/min
Pneumatic working port	Flange
Operating voltage	24V DC
Operating pressure	0.15 MPa ... 0.7 MPa
Operating pressure	1.5 bar ... 7 bar
Structural design	Piston slide with sealing ring
Certification	c UL us - Recognized (OL)
Certificate issuing authority	UL MH19482
Degree of protection	IP40
Exhaust air function	With flow control option
Sealing principle	Soft
Mounting position	Any
Manual override	Detenting Non-detenting
Type of control	Pilot-controlled
Pilot air supply port	Internal
Flow direction	Non-reversible
Symbol	00992897
Lap	Overlap
Signal status display	LED
Max. switching frequency	2 Hz
Changeover time	8 ms
Duty cycle	100%
Max. positive test pulse with 0 signal	1600 µs
Max. negative test pulse on 1 signal	3000 µs
Coil characteristics	24 V DC: 0.8 W
Permissible voltage fluctuations	+/- 10 %
Operating medium	Compressed air as per ISO 8573-1:2010 [7:4:4]
Information on operating and pilot media	Operation with oil lubrication possible (required for further use)
Vibration resistance	Transport application test with severity level 1 as per FN 942017-4 and EN 60068-2-6
Shock resistance	Shock test with severity level 1 as per FN 942017-5 and EN 60068-2-27
Corrosion resistance class (CRC)	0 - No corrosion stress

<b>Feature</b>	<b>Value</b>
LABS (PWIS) conformity	VDMA24364 zone III
Temperature of medium	-5 °C ... 50 °C
Pilot medium	Compressed air as per ISO 8573-1:2010 [7:4:4]
Ambient temperature	-5 °C ... 50 °C
Product weight	85 g
Electrical connection	2-pin Connection diagram H, horizontal connection Plug
Type of mounting	On terminal strip With through-hole
Pneumatic connection 2	Flange
Pneumatic connection 4	Flange
Note on materials	RoHS-compliant
Seals material	HNBR NBR
Housing material	Wrought aluminum alloy