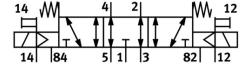



Air solenoid valve

VUVS-L30-P53E-MZD-G38-F8-1B2

FESTO

Part number: 575635



 [General operating condition](#)

Data sheet

Feature	Value
Valve function	5/3, exhausted
Actuation type	Electrical
Valve size	31 mm
Standard nominal flow rate	1600 l/min
Pneumatic working port	G3/8
Operating voltage	24V DC
Operating pressure	-0.09 MPa ... 1 MPa
Operating pressure	-0.9 bar ... 10 bar
Structural design	Piston gate valve
Reset method	Mechanical spring
Certification	c UL us - Recognized (OL)
Maritime classification	See certificate
Certificate issuing authority	DNVGL-TAA000011J
Degree of protection	IP65 With plug socket as per IEC 60529
Nominal width	8.1 mm
Exhaust air function	With flow control option
Sealing principle	Soft
Mounting position	Any
Manual override	Detenting Non-detenting
Type of control	Pilot-controlled
Pilot air supply port	External
Flow direction	Reversible
Symbol	00991032
Lap	Overlap
Pilot pressure MPa	0.25 MPa ... 1 MPa
Pilot pressure	2.5 bar ... 10 bar
b-value	0.4
C value	7.1 l/sbar
Switching time off	74 ms
On switching time	20 ms
Changeover time	36 ms
Duty cycle	100%
Max. positive test pulse with 0 signal	2000 µs

Feature	Value
Max. negative test pulse on 1 signal	3600 µs
Coil characteristics	24 V DC: 3.3 W
Permissible voltage fluctuations	+/- 10 %
Operating medium	Compressed air as per ISO 8573-1:2010 [7:4:4]
Information on operating and pilot media	Operation with oil lubrication possible (required for further use)
Vibration resistance	Transport application test with severity level 2 as per FN 942017-4 and EN 60068-2-6
Shock resistance	Shock test with severity level 2 as per FN 942017-5 and EN 60068-2-27
Corrosion resistance class (CRC)	2 - Moderate corrosion stress
Temperature of medium	-10 °C ... 60 °C
Pilot medium	Compressed air as per ISO 8573-1:2010 [7:4:4]
Ambient temperature	-10 °C ... 60 °C
Product weight	562 g
Electrical connection	Form B As per industrial standard (11 mm)
Type of mounting	Optionally: On terminal strip With through-hole
Venting hole connection	Not ducted
Pilot exhaust air port 82	M5
Pilot exhaust air port 84	M5
Pilot air port 12	G1/8
Pilot air port 14	G1/8
Pneumatic connection 1	G3/8
Pneumatic connection 2	G3/8
Pneumatic connection 3	G3/8
Pneumatic connection 4	G3/8
Pneumatic connection 5	G3/8
Note on materials	RoHS-compliant
Seals material	HNBR NBR
Housing material	Die-cast aluminum Painted
Piston slide material	Wrought aluminum alloy
Material of screws	Steel, nickel-plated