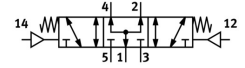



Pneumatic valve VUWS-L30-P53U-M-G38

Part number: 575629

FESTO



 [General operating condition](#)

Data sheet

| Feature | Value |
|--|--|
| Valve function | 5/3, pressurized |
| Actuation type | Pneumatic |
| Valve size | 31 mm |
| Standard nominal flow rate | 1500 l/min |
| Pneumatic working port | G3/8 |
| Operating pressure | -0.09 MPa ... 1 MPa |
| Operating pressure | -0.9 bar ... 10 bar |
| Structural design | Piston gate valve |
| Reset method | Mechanical spring |
| Certification | c UL us - Recognized (OL) |
| Nominal width | 8.1 mm |
| Exhaust air function | With flow control option |
| Sealing principle | Soft |
| Mounting position | Any |
| Manual override | None |
| Type of control | Direct |
| Pilot air supply port | Internal |
| Flow direction | Reversible |
| Symbol | 00991022 |
| Lap | Overlap |
| Pilot pressure MPa | 0.25 MPa ... 1 MPa |
| Pilot pressure | 2.5 bar ... 10 bar |
| Switching time off | 98 ms |
| On switching time | 19 ms |
| Changeover time | 41 ms |
| Explosion prevention and protection | Observe the information on the certificate Zone 1 (ATEX) Zone 2 (ATEX) Zone 21 (ATEX) Zone 22 (ATEX) |
| Operating medium | Compressed air as per ISO 8573-1:2010 [7:4:4] |
| Information on operating and pilot media | Operation with oil lubrication possible (required for further use) |
| Vibration resistance | Transport application test with severity level 2 as per FN 942017-4 and EN 60068-2-6 |
| Shock resistance | Shock test with severity level 2 as per FN 942017-5 and EN 60068-2-27 |
| Corrosion resistance class (CRC) | 2 - Moderate corrosion stress |
| LABS (PWIS) conformity | VDMA24364-B1/B2-L |

| Feature | Value |
|-------------------------|---|
| Temperature of medium | -10 °C ... 60 °C |
| Pilot medium | Compressed air as per ISO 8573-1:2010 [7:4:4] |
| Ambient temperature | -10 °C ... 60 °C |
| Product weight | 542 g |
| Type of mounting | Optionally: On terminal strip With through-hole |
| Venting hole connection | Not ducted |
| Pilot air port 12 | G1/8 |
| Pilot air port 14 | G1/8 |
| Pneumatic connection 1 | G3/8 |
| Pneumatic connection 2 | G3/8 |
| Pneumatic connection 3 | G3/8 |
| Pneumatic connection 4 | G3/8 |
| Pneumatic connection 5 | G3/8 |
| Note on materials | RoHS-compliant |
| Seals material | HNBR NBR |
| Housing material | Die-cast aluminum Painted |
| Piston slide material | Wrought aluminum alloy |
| Material of screws | Steel, nickel-plated |