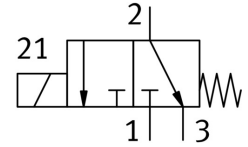


Media separated solenoid valve VYKB-F10-M32-16-PE-5HPA

Part number: 8122807

FESTO



[PDF](#) General operating condition

Data sheet

| Feature | Value |
|--|---|
| Structural design | Electrical connection at side Rocker valve with diaphragm seal |
| Sealing principle | Soft |
| Materials in contact with the media | EPDM PEEK |
| Valve function | 3/2, open/closed, monostable |
| Nominal width | 1.6 mm |
| Flow direction | Non-reversible |
| Actuation type | Electrical |
| Type of control | Direct |
| Reset method | Mechanical spring |
| Manual override | None |
| Mounting position | Any |
| Type of mounting | With through-hole for M2 screw |
| Electrical connection 1, connection type | Cable with plug |
| Electrical connection 1, connection technology | Port pattern HP |
| Size | 10 |
| Fluid connector | Flange |
| Medium | Liquid media Gaseous media |
| Information on medium | Observe resistance of materials that come into contact with media Maximum particle size 5 µm |
| Internal volume | 35 µl |
| Temperature of medium | 0 °C ... 50 °C |
| Temperature of liquid media | 0 °C ... 50 °C |
| Ambient temperature | 0 °C ... 50 °C |
| Storage temperature | -20 °C ... 70 °C |
| Medium pressure | -0.075 MPa ... 0.1 MPa |
| Medium pressure | -0.75 bar ... 1 bar |
| Medium pressure | -10.875 psi ... 14.5 psi |
| Overload pressure | 0.3 MPa |
| Overload pressure | 3 bar |
| Overload pressure | 43.5 psi |
| DC operating voltage range | 12 V |
| Permissible voltage fluctuations | -5 % / +10 % |
| Coil characteristics | 12 V DC: low-current phase 1 W, high-current phase 3.7 W |

| Feature | Value |
|--|---|
| Duty cycle | 100% |
| Max. switching frequency | 2 Hz |
| On switching time | ≤15 ms |
| Switching time off | ≤15 ms |
| Flow rate Kv | 0.034 m ³ /h |
| Symbol | 00997353 |
| Housing material | PEEK |
| Diaphragm material | EPDM |
| Seals material | EPDM |
| Note on materials | RoHS-compliant |
| LABS (PWIS) conformity | VDMA24364 zone III |
| Product weight | 18 g |
| Degree of protection | IP40 |
| Corrosion resistance class (CRC) | 0 - No corrosion stress |
| CE marking (see declaration of conformity) | As per EU EMC directive As per EU RoHS directive |
| UKCA marking (see declaration of conformity) | To UK instructions for EMC To UK RoHS instructions |