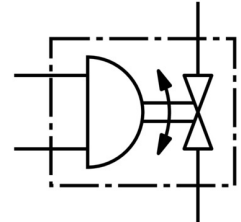


# Ball valve actuator unit VZBA-3/8"-WW-63-T-22-F0304-V4V4T-PP15-R-90-C

FESTO

Part number: 1810731



 [General operating condition](#)

## Data sheet

| Feature                                  | Value  |
|--|--|
| Structural design                        | 2-way ball valve<br>Quarter turn actuator  |
| Actuation type                           | Pneumatic  |
| Mounting position                        | Any  |
| Type of mounting                         | Line installation  |
| Fitting connection                       | Weld-on ends/weld-on ends  |
| Switching position indication            | Slot direction = flow direction  |
| Nominal width DN                         | 10   |
| Operating pressure                       | 6 bar ... 8.4 bar  |
| Nominal pressure of fitting PN           | 63   |
| Symbol                                   | 00991921   |
| Medium                                   | Compressed air as per ISO 8573-1:2010 [-::-]<br>Inert gas<br>Water – no water vapor<br>Neutral liquids |
| Operating medium                         | Compressed air as per ISO 8573-1:2010 [7:4:4]  |
| Information on operating and pilot media | Operation with oil lubrication possible (required for further use)                                     |
| Temperature of medium                    | -10 °C ... 200 °C  |
| Ambient temperature                      | -10 °C ... 80 °C   |
| Flow rate Kv                             | 10 m <sup>3</sup> /h   |
| Max. surface temperature of assembly     | TX   |
| Explosion group of assembly              | IIC, IIIC  |
| Note on materials                        | RoHS-compliant   |
| LABS (PWIS) conformity                   | VDMA24364 zone III   |
| Housing material                         | High-alloy stainless steel   |
| Material number of housing               | 1.4408   |
| Seals material                           | PTFE<br>PTFE-reinforced  |
| Ball material                            | High-alloy stainless steel   |
| Material number for ball                 | 1.4408   |
| Shaft material                           | High-alloy stainless steel   |
| Material number for shaft                | 1.4401   |
| Product weight                           | 1450 g   |

| Feature                             | Value  |
|-------------------------------------|--|
| Explosion prevention and protection | Zone 1 (ATEX)<br>Zone 2 (ATEX)<br>Zone 21 (ATEX)<br>Zone 22 (ATEX) |
| Explosive ambient temperature       | -10°C ≤ Ta ≤ +60°C   |
| Corrosion resistance class (CRC)    | 3 - High corrosion stress  |