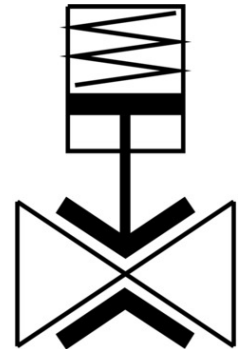


Pinch valve VZQA-C-M22C-15-S5S5-ALV4E-6-E

Part number: 3412425

FESTO



 [General operating condition](#)

Data sheet

| Feature | Value |
|--------------------------------|---|
| Structural design | Pinch valve, pneumatically operated |
| Actuation type | Pneumatic |
| Sealing principle | Soft |
| Mounting position | Any |
| Type of mounting | Line installation |
| Fitting connection | Clamp as per DIN 32676 series A |
| Nominal width DN | 15 |
| Valve function | 2/2, closed, monostable |
| Flow direction | Reversible |
| Medium pressure | 0 MPa ... 0.6 MPa |
| Medium pressure | 0 bar ... 6 bar |
| Medium pressure | 0 psi ... 87 psi |
| Operating pressure | 0.35 MPa ... 0.6 MPa |
| Operating pressure | 3.5 bar ... 6 bar |
| Operating pressure | 50.75 psi ... 87 psi |
| Nominal pressure of fitting PN | 10 |
| Burst pressure | 1.6 MPa |
| Burst pressure | 16 bar |
| Burst pressure | 232 psi |
| Reset method | Mechanical spring |
| Type of control | Externally controlled |
| Auxiliary pilot air port 12 | M5 |
| Pilot medium | Compressed air as per ISO 8573-1:2010 [7:4:1] |
| Symbol | 00992981 |
| Medium | Compressed air as per ISO 8573-1:2010 [:-:1] Water |
| Max. viscosity | 4000 mm ² /s |
| Temperature of medium | -5 °C ... 100 °C |
| Ambient temperature | -5 °C ... 60 °C |
| Storage temperature | 5 °C ... 20 °C |

| Feature | Value |
|------------------------------|--|
| Flow rate Kv | 5 m ³ /h |
| On switching time | 150 ms |
| Switching time off | 250 ms |
| Note on materials | RoHS-compliant |
| LABS (PWIS) conformity | VDMA24364 zone III |
| Housing material | Wrought aluminum alloy |
| Housing cover material | High-alloy stainless steel |
| Material no. housing cover | 1.4404 / AISI 316L |
| Seals material | FPM |
| Shut-off element material | EPDM |
| Product weight | 608 g |
| For use in the food industry | See supplementary material information |
| Material of bowl | PA6 |