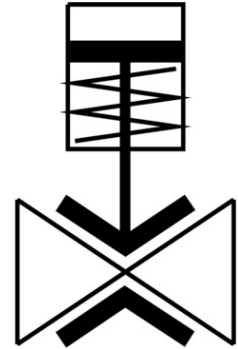


# Pinch valve VZQA-C-M22U-15-GG-V4V4E-4

Part number: 3022829

FESTO



 [General operating condition](#)

## Data sheet

| Feature                        | Value                                                                                                                                                                                                |
|--------------------------------|------------------------------------------------------------------------------------------------------------------------------------------------------------------------------------------------------|
| Structural design              | Pinch valve, pneumatically operated                                                                                                                                                                  |
| Actuation type                 | Pneumatic                                                                                                                                                                                            |
| Sealing principle              | Soft                                                                                                                                                                                                 |
| Mounting position              | Any                                                                                                                                                                                                  |
| Type of mounting               | Line installation                                                                                                                                                                                    |
| Fitting connection             | G1/2                                                                                                                                                                                                 |
| Nominal width DN               | 15                                                                                                                                                                                                   |
| Valve function                 | 2/2, open, monostable                                                                                                                                                                                |
| Flow direction                 | Reversible                                                                                                                                                                                           |
| Medium pressure                | 0 MPa ... 0.4 MPa                                                                                                                                                                                    |
| Medium pressure                | 0 bar ... 4 bar                                                                                                                                                                                      |
| Medium pressure                | 0 psi ... 58 psi                                                                                                                                                                                     |
| Note on the medium pressure    | Use in the vacuum range was tested up to -0.09 MPa with air at room temperature. Depending on the application, a counter vacuum may have to be applied on the control side to ensure the media flow. |
| Operating pressure             | 0.1 MPa ... 0.65 MPa                                                                                                                                                                                 |
| Operating pressure             | 1 bar ... 6.5 bar                                                                                                                                                                                    |
| Operating pressure             | 14.5 psi ... 94.25 psi                                                                                                                                                                               |
| Nominal pressure of fitting PN | 10                                                                                                                                                                                                   |
| Differential pressure          | 0.25 MPa                                                                                                                                                                                             |
| Differential pressure          | 2.5 bar                                                                                                                                                                                              |
| Differential pressure          | 36.25 psi                                                                                                                                                                                            |
| Burst pressure                 | 1.6 MPa                                                                                                                                                                                              |
| Burst pressure                 | 16 bar                                                                                                                                                                                               |
| Burst pressure                 | 232 psi                                                                                                                                                                                              |
| Overload pressure              | 0.78 MPa                                                                                                                                                                                             |
| Overload pressure              | 7.8 bar                                                                                                                                                                                              |
| Overload pressure              | 113.1 psi                                                                                                                                                                                            |
| Reset method                   | Rebound resilience                                                                                                                                                                                   |
| Type of control                | Externally controlled                                                                                                                                                                                |

| Feature                                            | Value                                                                                                                                                                                                                             |
|----------------------------------------------------|-----------------------------------------------------------------------------------------------------------------------------------------------------------------------------------------------------------------------------------|
| Auxiliary pilot air port 12                        | G1/8                                                                                                                                                                                                                              |
| Pilot medium                                       | Compressed air as per ISO 8573-1:2010 [7:4:1]                                                                                                                                                                                     |
| Symbol                                             | 00995245                                                                                                                                                                                                                          |
| Medium                                             | Compressed air as per ISO 8573-1:2010 [-:~:1]<br>Water                                                                                                                                                                            |
| Max. viscosity                                     | 4000 mm <sup>2</sup> /s                                                                                                                                                                                                           |
| Temperature of medium                              | -5 °C ... 100 °C                                                                                                                                                                                                                  |
| Ambient temperature                                | -5 °C ... 60 °C                                                                                                                                                                                                                   |
| Storage temperature                                | 5 °C ... 20 °C                                                                                                                                                                                                                    |
| Flow rate Kv                                       | 5 m <sup>3</sup> /h                                                                                                                                                                                                               |
| On switching time                                  | 250 ms                                                                                                                                                                                                                            |
| Switching time off                                 | 250 ms                                                                                                                                                                                                                            |
| Note on materials                                  | RoHS-compliant                                                                                                                                                                                                                    |
| LABS (PWIS) conformity                             | VDMA24364 zone III                                                                                                                                                                                                                |
| Suitability for the production of Li-ion batteries | Metals with more than 1% by mass of copper, zinc or nickel by mass are excluded from use. Exceptions are nickel in steel, chemically nickel-plated surfaces, printed circuit boards, cables, electrical plug connectors and coils |
| Housing material                                   | High-alloy stainless steel                                                                                                                                                                                                        |
| Material number of housing                         | 1.4404                                                                                                                                                                                                                            |
| Housing cover material                             | High-alloy stainless steel                                                                                                                                                                                                        |
| Seals material                                     | FPM                                                                                                                                                                                                                               |
| Shut-off element material                          | EPDM                                                                                                                                                                                                                              |
| Product weight                                     | 431 g                                                                                                                                                                                                                             |
| For use in the food industry                       | See supplementary material information                                                                                                                                                                                            |
| Material of bowl                                   | PA6                                                                                                                                                                                                                               |