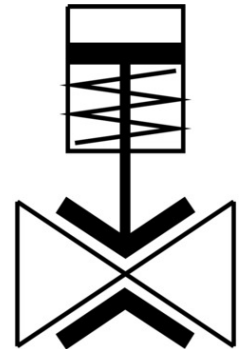


Pinch valve VZQA-C-M22U-50-GG-V2V4E-2

Part number: 8172745

FESTO



 [General operating condition](#)

Data sheet

| Feature | Value |
|--------------------------------|--|
| Structural design | Pinch valve, pneumatically operated |
| Actuation type | Pneumatic |
| Sealing principle | Soft |
| Mounting position | Any |
| Type of mounting | Line installation |
| Fitting connection | G2 |
| Nominal width DN | 50 |
| Valve function | 2/2, open, monostable |
| Flow direction | Reversible |
| Medium pressure | 0 MPa ... 0.2 MPa |
| Medium pressure | 0 bar ... 2 bar |
| Medium pressure | 0 psi ... 29 psi |
| Note on the medium pressure | Use in the vacuum range was tested up to -0.09 MPa with air at room temperature. Depending on the application, a counter vacuum may have to be applied on the control side to ensure the media flow. |
| Operating pressure | 0 MPa ... 0.45 MPa |
| Operating pressure | 0 bar ... 4.5 bar |
| Operating pressure | 0 psi ... 65.25 psi |
| Nominal pressure of fitting PN | 10 |
| Differential pressure | 0.25 MPa |
| Differential pressure | 2.5 bar |
| Differential pressure | 36.25 psi |
| Burst pressure | 1.6 MPa |
| Burst pressure | 16 bar |
| Burst pressure | 232 psi |
| Overload pressure | 0.78 MPa |
| Overload pressure | 7.8 bar |
| Overload pressure | 113.1 psi |
| Reset method | Rebound resilience |
| Type of control | Externally controlled |

| Feature | Value |
|--|---|
| Auxiliary pilot air port 12 | G1/8 |
| Pilot medium | Compressed air as per ISO 8573-1:2010 [7:4:1] |
| Symbol | 00995245 |
| Medium | Compressed air as per ISO 8573-1:2010 [-:~:1] Water |
| Max. viscosity | 4000 mm ² /s |
| Temperature of medium | -5 °C ... 100 °C |
| Ambient temperature | -5 °C ... 60 °C |
| Storage temperature | 5 °C ... 20 °C |
| Flow rate Kv | 72 m ³ /h |
| On switching time | 200 ms |
| Switching time off | 1000 ms |
| Note on materials | RoHS-compliant |
| LABS (PWIS) conformity | VDMA24364 zone III |
| Suitability for the production of Li-ion batteries | Metals with more than 1% by mass of copper, zinc or nickel by mass are excluded from use. Exceptions are nickel in steel, chemically nickel-plated surfaces, printed circuit boards, cables, electrical plug connectors and coils |
| Housing material | High-alloy stainless steel |
| Material number of housing | 1.4307 |
| Housing cover material | High-alloy stainless steel |
| Material no. housing cover | 1.4404 |
| Seals material | VMQ |
| Shut-off element material | EPDM |
| Product weight | 2886 g |
| For use in the food industry | See supplementary material information |
| Material of bowl | Die-cast aluminum |