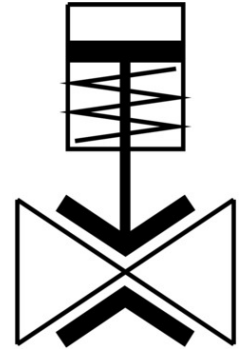



Pinch valve VZQA-C-M22U-50-TT-ALALE-2

Part number: 8161477

FESTO



 [General operating condition](#)

Data sheet

Feature	Value
Structural design	Pinch valve, pneumatically operated
Actuation type	Pneumatic
Sealing principle	Soft
Mounting position	Any
Type of mounting	Line installation
Fitting connection	2 NPT
Nominal width DN	50
Valve function	2/2, open, monostable
Flow direction	Reversible
Medium pressure	0 MPa ... 0.2 MPa
Medium pressure	0 bar ... 2 bar
Medium pressure	0 psi ... 29 psi
Note on the medium pressure	Use in the vacuum range was tested up to -0.09 MPa with air at room temperature. Depending on the application, a counter vacuum may have to be applied on the control side to ensure the media flow.
Operating pressure	0 MPa ... 0.45 MPa
Operating pressure	0 bar ... 4.5 bar
Operating pressure	0 psi ... 65.25 psi
Nominal pressure of fitting PN	10
Differential pressure	0.25 MPa
Differential pressure	2.5 bar
Differential pressure	36.25 psi
Burst pressure	1.6 MPa
Burst pressure	16 bar
Burst pressure	232 psi
Overload pressure	0.78 MPa
Overload pressure	7.8 bar
Overload pressure	113.1 psi
Reset method	Rebound resilience
Type of control	Externally controlled

Feature	Value
Auxiliary pilot air port 12	G1/8
Pilot medium	Compressed air as per ISO 8573-1:2010 [7:4:1]
Symbol	00995245
Medium	Compressed air as per ISO 8573-1:2010 [-:~:1] Water
Max. viscosity	4000 mm ² /s
Temperature of medium	-5 °C ... 100 °C
Ambient temperature	-5 °C ... 60 °C
Storage temperature	5 °C ... 20 °C
Flow rate Kv	72 m ³ /h
On switching time	200 ms
Switching time off	1000 ms
Note on materials	RoHS-compliant
LABS (PWIS) conformity	VDMA24364 zone III
Suitability for the production of Li-ion batteries	Metals with more than 1% by mass of copper, zinc or nickel by mass are excluded from use. Exceptions are nickel in steel, chemically nickel-plated surfaces, printed circuit boards, cables, electrical plug connectors and coils
Housing material	Wrought aluminum alloy
Housing cover material	Wrought aluminum alloy
Seals material	VMQ
Shut-off element material	EPDM
Product weight	1302 g
For use in the food industry	See supplementary material information
Material of bowl	Die-cast aluminum