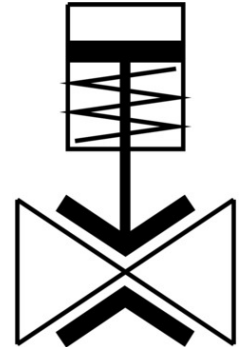


Pinch valve

VZQA-C-M22U-6-S5S5-V4V4S1-4

Part number: 2931682

FESTO



 [General operating condition](#)

Data sheet

| Feature | Value |
|--------------------------------|--|
| Structural design | Pinch valve, pneumatically operated |
| Actuation type | Pneumatic |
| Sealing principle | Soft |
| Mounting position | Any |
| Type of mounting | Line installation |
| Fitting connection | Clamp as per DIN 32676 series A |
| Nominal width DN | 6 |
| Valve function | 2/2, open, monostable |
| Flow direction | Reversible |
| Medium pressure | 0 MPa ... 0.4 MPa |
| Medium pressure | 0 bar ... 4 bar |
| Medium pressure | 0 psi ... 58 psi |
| Note on the medium pressure | Use in the vacuum range was tested up to -0.09 MPa with air at room temperature. Depending on the application, a counter vacuum may have to be applied on the control side to ensure the media flow. |
| Operating pressure | 0.1 MPa ... 0.65 MPa |
| Operating pressure | 1 bar ... 6.5 bar |
| Operating pressure | 14.5 psi ... 94.25 psi |
| Nominal pressure of fitting PN | 10 |
| Differential pressure | 0.25 MPa |
| Differential pressure | 2.5 bar |
| Differential pressure | 36.25 psi |
| Burst pressure | 1.6 MPa |
| Burst pressure | 16 bar |
| Burst pressure | 232 psi |
| Overload pressure | 0.78 MPa |
| Overload pressure | 7.8 bar |
| Overload pressure | 113.1 psi |
| Reset method | Rebound resilience |
| Type of control | Externally controlled |

| Feature | Value |
|--|---|
| Auxiliary pilot air port 12 | M5 |
| Pilot medium | Compressed air as per ISO 8573-1:2010 [7:4:4] |
| Symbol | 00995245 |
| Medium | Compressed air as per ISO 8573-1:2010 [-::-] |
| Max. viscosity | 4000 mm ² /s |
| Temperature of medium | -5 °C ... 150 °C |
| Ambient temperature | -5 °C ... 60 °C |
| Storage temperature | 5 °C ... 30 °C |
| Flow rate Kv | 0.7 m ³ /h |
| On switching time | 125 ms |
| Switching time off | 125 ms |
| Note on materials | RoHS-compliant |
| LABS (PWIS) conformity | VDMA24364 zone III |
| Suitability for the production of Li-ion batteries | Metals with more than 1% by mass of copper, zinc or nickel by mass are excluded from use. Exceptions are nickel in steel, chemically nickel-plated surfaces, printed circuit boards, cables, electrical plug connectors and coils |
| Housing material | High-alloy stainless steel |
| Material number of housing | 1.4404 |
| Housing cover material | High-alloy stainless steel |
| Seals material | FPM |
| Shut-off element material | VMQ (silicone) |
| Product weight | 215 g |
| For use in the food industry | See declaration of conformity |
| Material of bowl | PA6 |