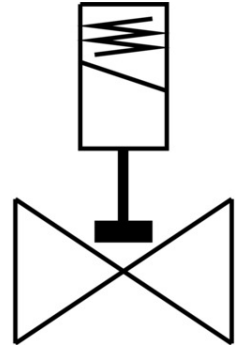


Air solenoid valve

VZWD-L-M22C-M-G14-50-V-1P4-5-R1

FESTO

Part number: 1491862



[PDF](#) General operating condition

Data sheet

| Feature | Value |
|----------------------------------|--|
| Structural design | Directly controlled poppet valve |
| Actuation type | Electrical |
| Sealing principle | Soft |
| Mounting position | Any |
| Type of mounting | Line installation |
| Fitting connection | G1/4 |
| Electrical connection | Form A Plug as per EN 175301-803 Rectangular design |
| Nominal width | 5 mm |
| Valve function | 2/2, closed, monostable |
| Manual override | None |
| Flow direction | Non-reversible |
| Medium | Compressed air as per ISO 8573-1:2010 [7:4:4] Inert gas Mineral oil Water Neutral liquids Other flow media on request |
| Nominal pressure of fitting PN | 100 |
| Pressure difference | 0 MPa |
| Differential pressure | 0 bar |
| Pressure difference | 0 psi |
| Coil characteristics | 24 V DC: 11.0 W |
| Insulation class | H |
| Permissible voltage fluctuations | +/- 10 % |
| Duty cycle | 100% |
| Reset method | Mechanical spring |
| Type of control | Direct |
| Symbol | 00992979 |
| Medium pressure | 0 MPa ... 0.5 MPa |

| Feature | Value |
|----------------------------------|----------------------------|
| Medium pressure | 0 bar ... 5 bar |
| Medium pressure | 0 psi ... 72.5 psi |
| Max. viscosity | 22 mm ² /s |
| Temperature of medium | -10 °C ... 80 °C |
| Ambient temperature | -10 °C ... 35 °C |
| Leak rate to EN 12266-1 | A |
| Flow rate Kv | 0.35 m ³ /h |
| Standard nominal flow rate | 375 l/min |
| On switching time | 20 ms |
| Switching time off | 18 ms |
| Note on materials | RoHS-compliant |
| LABS (PWIS) conformity | VDMA24364 zone III |
| Housing material | High-alloy stainless steel |
| Material number of housing | 1.4305 |
| Seals material | FPM |
| Product weight | 650 g |
| Degree of protection | IP65 |
| Corrosion resistance class (CRC) | 3 - High corrosion stress |