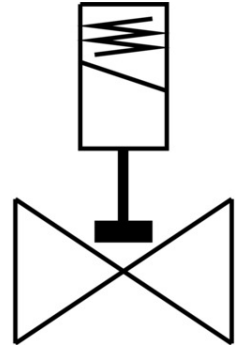


# Air solenoid valve

## VZWD-L-M22C-M-N14-25-V-1P4-22-R1

FESTO

Part number: 1491898



[PDF](#) General operating condition

## Data sheet

| Feature                          | Value  |
|----------------------------------|--|
| Structural design                | Directly controlled poppet valve   |
| Actuation type                   | Electrical   |
| Sealing principle                | Soft   |
| Mounting position                | Any  |
| Type of mounting                 | Line installation  |
| Fitting connection               | 1/4 NPT  |
| Electrical connection            | Form A<br>Plug<br>as per EN 175301-803<br>Rectangular design   |
| Nominal width                    | 2.5 mm   |
| Valve function                   | 2/2, closed, monostable  |
| Manual override                  | None   |
| Flow direction                   | Non-reversible   |
| Medium                           | Compressed air as per ISO 8573-1:2010 [7:4:4]<br>Inert gas<br>Mineral oil<br>Water<br>Neutral liquids<br>Other flow media on request |
| Nominal pressure of fitting PN   | 100  |
| Pressure difference              | 0 MPa  |
| Differential pressure            | 0 bar  |
| Pressure difference              | 0 psi  |
| Coil characteristics             | 24 V DC: 11.0 W  |
| Insulation class                 | H  |
| Permissible voltage fluctuations | +/- 10 %   |
| Duty cycle                       | 100%   |
| Reset method                     | Mechanical spring  |
| Type of control                  | Direct   |
| Symbol                           | 00992979   |
| Medium pressure                  | 0 MPa ... 2.2 MPa  |

| Feature                          | Value                      |
|----------------------------------|----------------------------|
| Medium pressure                  | 0 bar ... 22 bar           |
| Medium pressure                  | 0 psi ... 319 psi          |
| Max. viscosity                   | 22 mm <sup>2</sup> /s      |
| Temperature of medium            | -10 °C ... 80 °C           |
| Ambient temperature              | -10 °C ... 35 °C           |
| Leak rate to EN 12266-1          | A                          |
| Flow rate Kv                     | 0.16 m <sup>3</sup> /h     |
| Standard nominal flow rate       | 170 l/min                  |
| On switching time                | 20 ms                      |
| Switching time off               | 18 ms                      |
| Note on materials                | RoHS-compliant             |
| LABS (PWIS) conformity           | VDMA24364 zone III         |
| Housing material                 | High-alloy stainless steel |
| Material number of housing       | 1.4305                     |
| Seals material                   | FPM                        |
| Product weight                   | 650 g                      |
| Degree of protection             | IP65                       |
| Corrosion resistance class (CRC) | 3 - High corrosion stress  |